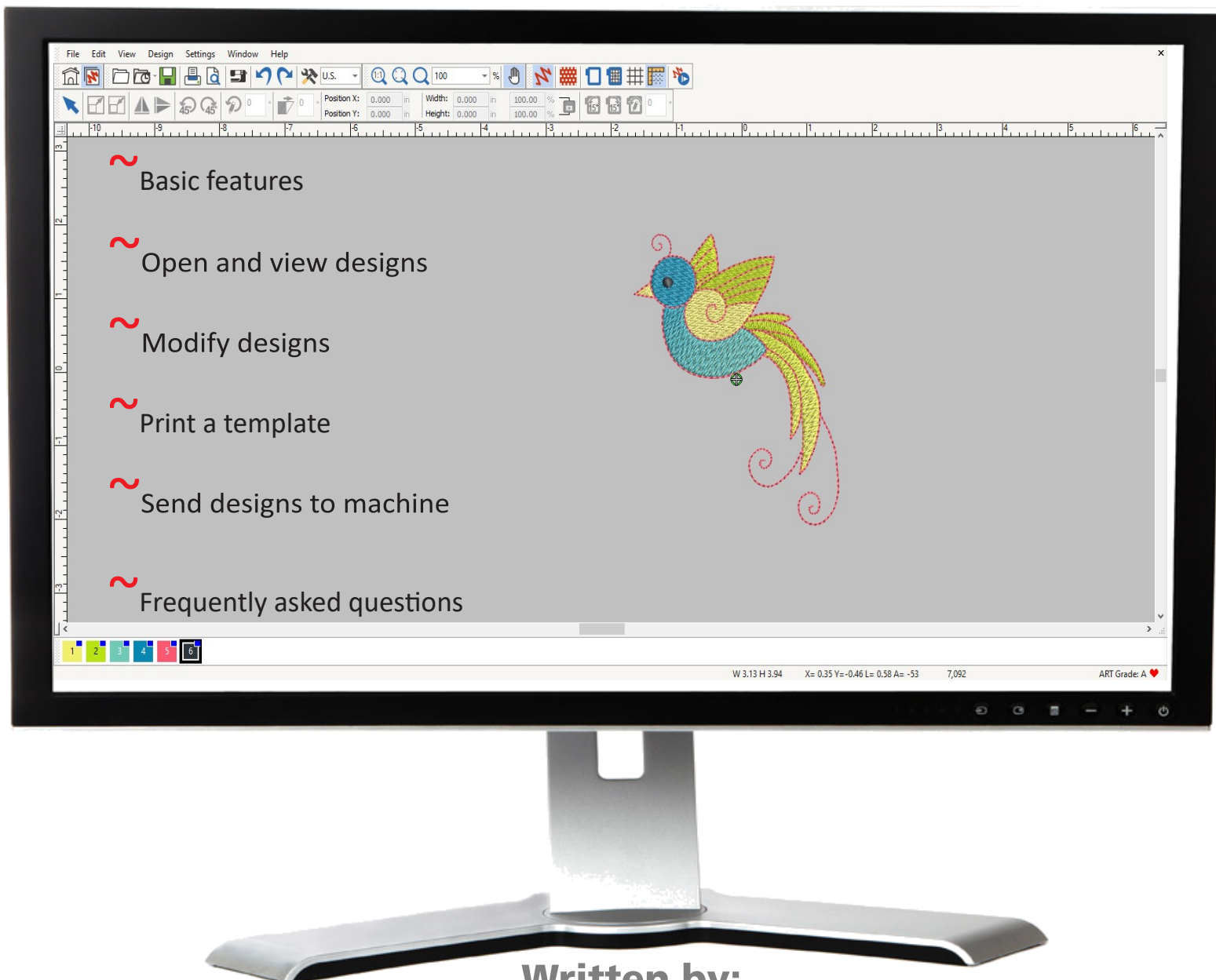


Just EMBROIDER It!

ARTlink 9 Basics



Written by:
Debbi Lashbrook, BERNINA Educator
Software Specialist

What is ARTlink?

ARTlink 9 is a basic software program that lets you to open an embroidery design, make basic adjustments to the design, and write the design directly to your embroidery machine or to a removable device, such as a USB stick. You can download the program on BERNINA's website, using this link:

[BERNINA ARTlink 9: free embroidery software - BERNINA](#)

What ARTlink can do:

- Open embroidery designs of different file formats
- Convert embroidery designs to another format
- Send embroidery designs with the proper format to your BERNINA embroidery machine using a direct connection or USB stick
- Export machine files in formats used by non-BERNINA machines
- Rotate designs
- Scale (resize) designs
- Mirror designs, either horizontally or vertically
- Skew designs
- Assign thread colors
- Print a paper template

For the more advanced editing features listed below, BERNINA Embroidery Software 9 is available in Creator level and DesignerPlus level. For information about these software programs, click on this link:

[BERNINA Embroidery Software 9 - Software - BERNINA](#)

- Create embroidery designs
- Combine embroidery designs
- Digitize artwork into an embroidery design
- Digitize fonts or lettering
- Add lettering to a design
- Send designs to the BERNINA WiFi Device

This workbook is designed to teach you how to edit designs in ARTlink. When the software is installed, a short-cut icon is added to your desktop.

Open ARTlink 9



Double click on the desktop icon to open BERNINA ARTlink 9.

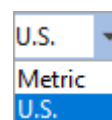
Home Screen

ARTlink opens to a Home Screen. In the Home Screen, you can view BERNINA tutorials by clicking on the Tutorials tab. To view software tutorials, click on Featured Tutorials. After reselecting the Home tab, you can click on links to webinars, Embroidery Online, or the BERNINA website or blog.

The My Profile tab lets you edit your personal profile. The Help tab will open BERNINA Software 9 Help if you are online. Click on Embroidery Canvas to open a design.

Changing the Measurement System

You can change the Measurement System of the software by clicking on the drop-down arrow by the displayed system to select the other system. This is found in the first row of icons.



Open an Embroidery Design



- Click the Open icon (the file folder) or click on File> Open from the menu.
- You may also open a recent file by clicking on the Open Recent File icon.
- The Open Design dialog box opens.
- The type of file defaults to .ART. To open a different file type, click on the drop-down arrow to select the file format you wish to open, or select All Files.
- Browse to the location of the embroidery design you wish to open. Select the design; then click on Open.

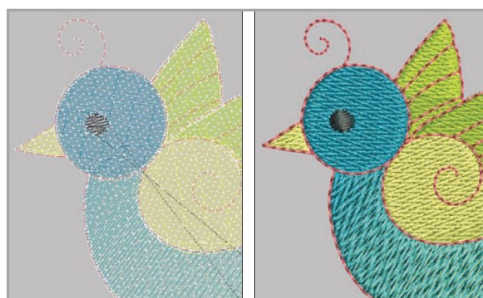
Download the Design

- Use the design included in the workbook download to work through the steps.
- The download will need to be unzipped first.

Viewing the Design: Artistic vs. Design View



- Open the design, WP099.ART.
- You can view the design in two ways; either in Design View or Artistic View (a rendering of the actual stitches). To change from one view to the other, click on the icon, Show Artistic View.
- A blue-background icon means that the icon is active. The first time the software opens, it will open the design in Artistic View. Whatever view is active when you close the software determines how the design will open the next time you use the software.



Design View

Artistic View

Zoom Toolbar



Mouse scroll wheel: You can zoom in and out using the center scroll wheel on your mouse. You can also use the icons from the Zoom Toolbar in the first row of icons or select an option from the drop-down menu by the Zoom %.

Zoom 1:1: Select the first icon or select 100% from the drop-down arrow selections. The design will be shown onscreen at its actual size.

Zoom To Fit: The design will fill the screen.

Zoom Tool: Magnifying Glass:

Select the icon and the cursor turns into a magnifying glass. Click and drag a box around the area you want to focus on. When you release the mouse, that area will fill the screen.

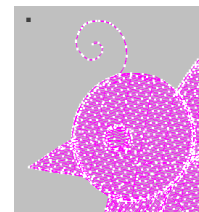
Pan: You can move the position of the design on the screen without changing the position within the hoop or the zoom level.

View Toolbar



There are additional icons in the View Toolbar that affect what is seen on screen.

Switch to Design View by clicking on the first icon and then click on the Show Needle Points icon (the second icon). All needle penetrations are displayed in the design as white dots. To turn this view off, click on the Needle Points icon again.

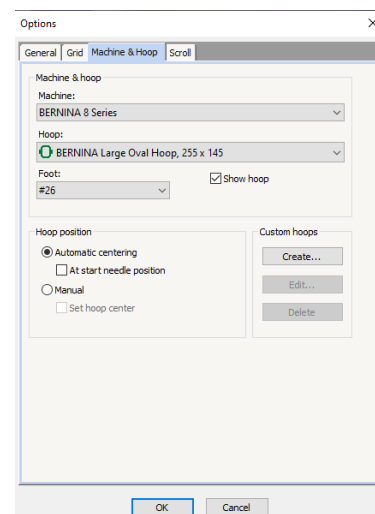


Show Hoop:



Left click on the Show Hoop icon to hide or show the hoop. When the icon is blue, the hoop will be shown.

Right click on the icon to show a list of possible hoops. Choose your machine, the hoop size, and the foot. Press OK to activate the changes.



Show Template



When Show Template is activated, the plastic template that comes with your machine will be shown.

Show Grid



When Show Grid is activated, a grid will be shown on the design. Alter the size of the grid by right clicking on the icon and entering new values. Press OK in the dialog box to activate the changes.

Show Ruler

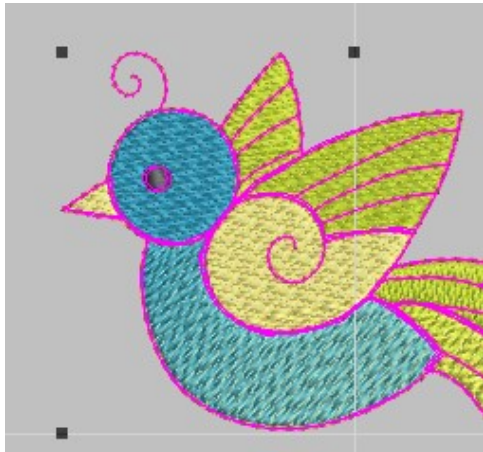


Click on Show Ruler to hide or show the horizontal and vertical rulers.

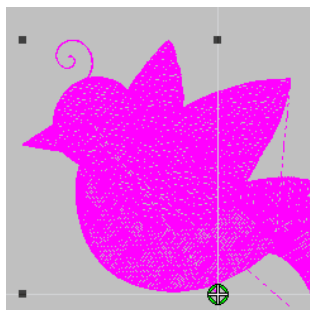
Selecting the Design

Select, Artistic View: To make adjustments to the design, first select it by clicking anywhere on the design. Black control handles appear around the design when the design is selected.

Black handles indicate the design is selected.



Select, Design View: When the view is switched to Design View and the design is selected, the design turns pink.



Deselect: Deselect the design by pressing the Esc key or by clicking anywhere on the screen away from the design.

Modify the Design

Once the design is selected, the icons will be activated and will appear in color. If the design is not selected, the icons will appear grayed out.

Design is selected; icons appear in color:



Design is not selected; icons are grayed out.



Modify the Design (continued)

Rotate 45 Degrees CCW / CW:



With the design selected, click either of the rotate 45 degree icons. Each time you click the icon, the design will rotate another 45 degrees.

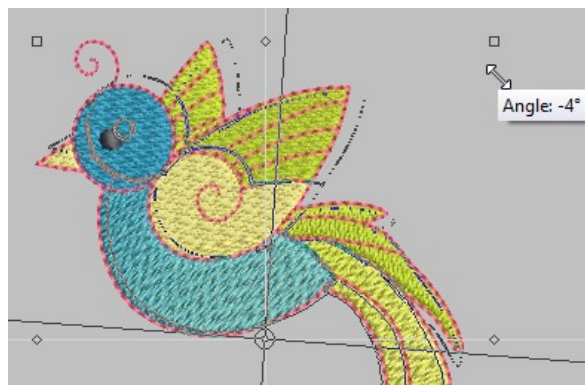
Rotate by Percent:



With the design selected, enter a value in degrees into the rotate box and press Enter. The design will rotate and the value will be reset to 0.

Rotate by Dragging:

Click on the design twice and the control handles will appear hollow instead of black. To rotate the design visually, click on one of the corner handles and drag in the direction you wish to rotate the design.



An outline of the rotated design appears as you rotate and the degree of rotation appears in a flag. When the mouse is released, the design will be rotated.

Scale Down / Up:

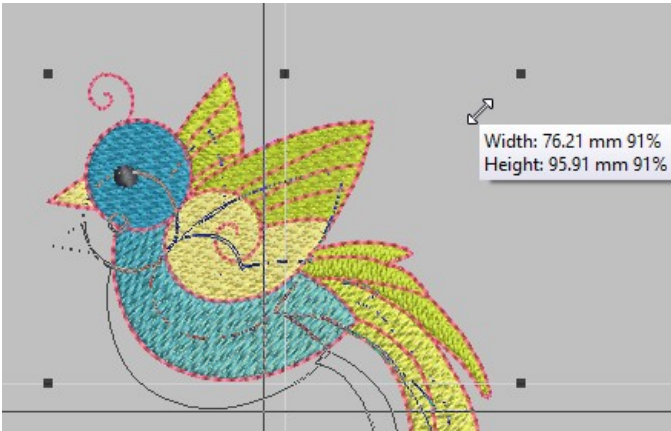


Each time the Scale Down icon is clicked, the design is reduced in size by 10%. After the design is scaled, the new size is 100%. The same is true for Scale Up, but the design is increased in size.

Stitches are added when the design is increased in size; stitches are taken away when the design is decreased in size.

Changing the Scale Visually



Click and drag on one of the corner control handles to scale the design up or down. The white box near the design shows the new width and height of the design and the percent the design has been scaled. Once the mouse is released, the new measurement of the design becomes 100%.



An outline of the resized design appears until the mouse is released.

Changing the Design Size by a Specific Amount:

Change the design by a specific percentage or by a specific measurement through the measurement box in the second row of icons.

Width:	3.290	in	100.00	%	
Height:	4.140	in	100.00	%	

To change the dimensions proportionally, keep Proportional Scaling in the locked position. The ratio between the length and width will be maintained.



To change the length or width independently of the other dimension, click on Proportional Scaling to open the lock.

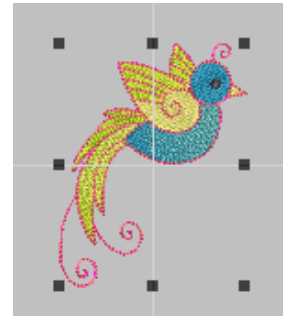
Enter the desired dimensions in actual amounts or in a percentage and press Enter to activate the change.

The percentage will revert back to 100% after the change and the new dimensions will be shown.

Mirror Horizontal:



Select the design and click the Mirror Horizontal icon to reverse the image horizontally.



Mirror Vertical:



Select the design and click the Mirror Vertical icon to reverse the image vertically.



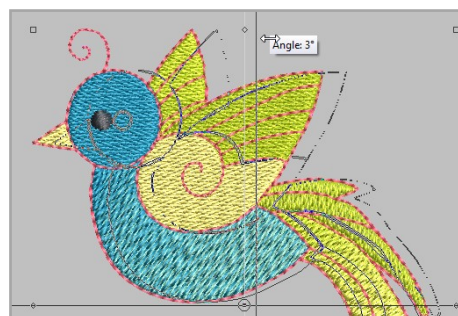
Skewing a Design:



Skew a design by entering a value in the Skew box and pressing Enter.

To visually skew a design, change the black selection control handles to hollow control handles by clicking on the design.

Click on any of the middle diamond-shaped handles to skew the design. These diamond-shape handles appear in the horizontal and vertical middle of the control handles. A flag appears showing the degree of the skew. Release the mouse to create the skewed design.



Print a Template

A printed template is helpful for previewing the design on the item to be embroidered and as an aid to proper placement on that item.



- Select the Print Preview icon or select File > Print Preview.
- Click Options.
- In the Print Options dialog box, make sure the view is set to 100% of actual size.
- To omit the design information to save paper, uncheck Design information.
- Select OK.
- Select Print Now to print your template.

Print Options

Worksheets

☒ Design worksheet ☐ Appliqué patterns

☐ Color film ☐ Hooping sequence

☒ Print as thumbnails

Design Worksheet

☒ Stitches ☐ Hoop

☐ Artistic view ☒ Hoop template

☒ Connectors ☐ Hoop position marker

☒ Outlines ☐ Work area

☐ Grid

☒ Guides

☒ Start & end crosshairs ☒ Design information

☐ Background ☐ Thread usage

☐ Design boundary ☒ Machine runtime

☐ Print on separate page

Standard Design View Layout Template

Selection

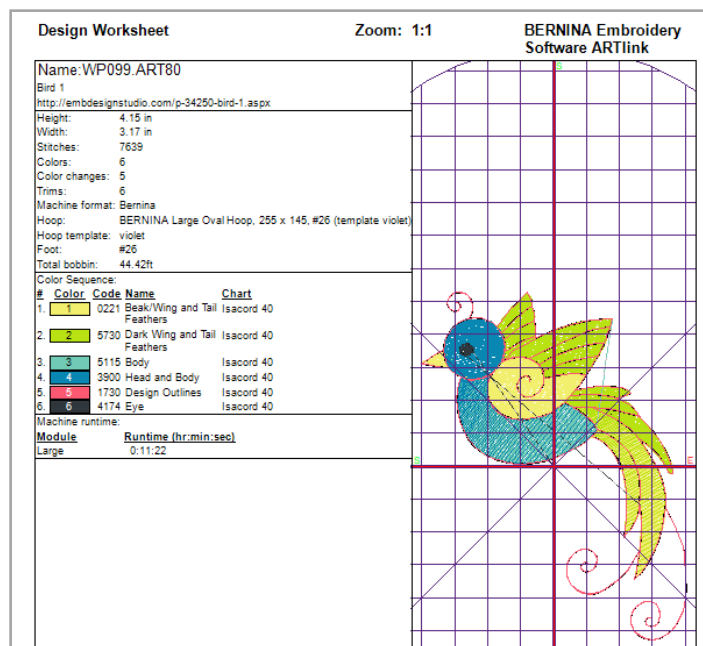
☒ Whole design ☐ Selected objects

Zoom

☒ Zoom 1:1 ☐ 100 % of actual size

☐ Zoom to fit ☐ Zoom to article

Font... OK Cancel



Stitching the Design



- Click on the Write to Card/Machine icon or select File> Write to Card/Machine.
- The Device Selection Box will appear.
- Select the appropriate type of transfer for your machine.
- Click OK.

Write/Read designs in EXP format to/from USB stick

Load design directly to machine for stitching

Write/Read design to/from machine's memory or USB stick plugged into the machine



Write/Read designs in EXP format to/from Deco 330/340 Memory Card or Deco 340 USB stick

Write/Read designs in EXP format to artista 165-185 or serial Reader/Writer box

Write/Read design in Art V4 format to USB stick for artista 200/730

made to create **BERNINA**

For More Information

This guide is intended to get you up and running quickly and easily using ARTlink 9.

For in-depth instruction, open the ARTlink 9 software and select Help> Reference Manual from the menu. Below is the Table of Contents from the manual.

Table of Contents	
▶	Introduction
▶	Basic Procedures
▶	Hardware & System Setup
▶	Viewing & Selecting Designs
▶	Hooping Designs
▶	Thread Colors & Charts
▶	Arranging & Transforming Designs
▶	Outputting & Storing Designs
	Shortcut Keys
	Index

Note:

- A list of ARTlink Shortcut keys can be found on page 146 of the manual.
- Read about the Stitch Player in Chapter 4, page 60. Stitch Player lets you simulate the actual embroidery stitch-out on screen.
- For more information about controlling start and end positions, see Chapter 5, page 85.
- To learn more about thread colors and charts, see Chapter 6 of the manual.
- To get more detailed information about how designs are exported to embroidery machines, please see Chapter 8. This will detail how designs are exported to BERNINA machines and USB sticks.

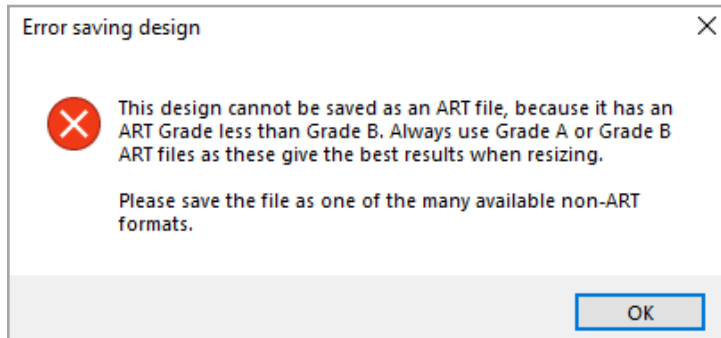
Frequently Asked Questions

Question: How do I save a design in ARTlink?

Answer: .ART designs that are opened and changed in ARTlink 9, may be saved in .ART format by selecting File> Save As. You may save the designs as Version 3, 4, 5, 6, 7, or 8 designs and a few other all-in-one formats.

Question: How do I convert another design format to .ART format?

Answer: Embroidery designs that were originally created as another format cannot be converted to .ART. If you attempt to Save As the .ART format, you will see the error message below. However, when a design of another format is opened in the software and written to the BERNINA machine or USB stick using the Write to Machine icon, the software automatically converts the design to the format needed by the model chosen in the Device Selection box.



Question: How do I convert a design to a format other than .ART?

Answer: With the design open onscreen, select File> Export Machine File, and select the desired format from the drop-down choices of Save As Type.

Click Save, being sure to note the folder location where you are saving the file. ARTlink 9 can open and convert many of the most popular embroidery formats.

Question: I can't get ARTlink 9 installed on my computer.

Answer: Open a help ticket with BERNINA Software Technical support by visiting: www.bernina.com/help.

Question: Will ARTlink 9 work with my aurora model?

Answer: Yes, ARTlink 9 includes EC on PC which is necessary for embroidery with aurora model machines.

Question: Will ARTlink 9 work on a Mac?

Answer: ARTlink 9 may be installed and operated on a Macintosh computer, and is supported by BERNINA under the following configuration:

- The Mac is running OSx Lion or newer
- Bootcamp 4.0 is correctly configured
- Windows 10 or 11 is installed on the Bootcamp partition

Question: What format design does my BERNINA machine accept?

Answer: Most current machines accept the BERNINA .EXP format. This format consists of three files for each design:

- .EXP is the embroidery design
- .BMP is the thumbnail image of the design
- INF is the thread color information

The older artista machine models, 200 and 730, also accept the .ART Version 4 format.



To send a design to your BERNINA machine in the proper format, simply open the design in ARTlink, then click on the Write to Card/Machine icon and choose the appropriate selection. The software will convert the design and write the appropriate files for use in your model. With the 200 and 730, you can choose either EXP or ART Version 4.

