



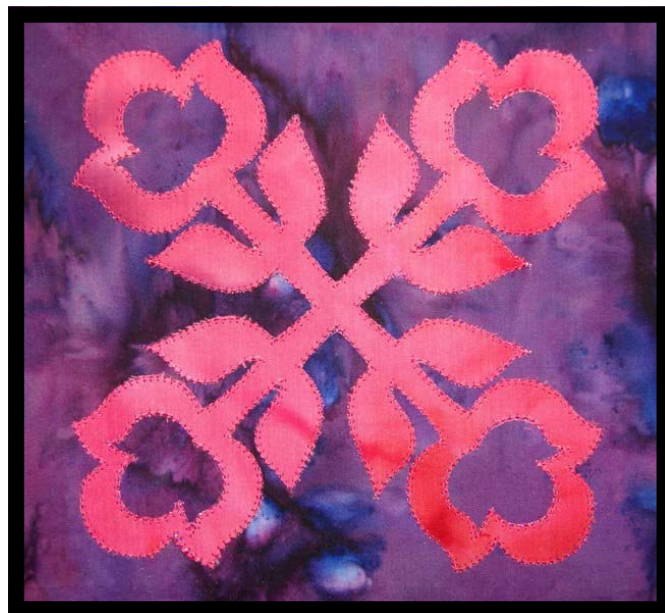
Hawaiian Appliqué

by Amanda Whitlatch

Let's get creative with the revolutionary BERNINA CutWork tool. Explore the appliqué feature of the CutWork tool and learn to create awesome Hawaiian Appliqué...great for quilt blocks and more!

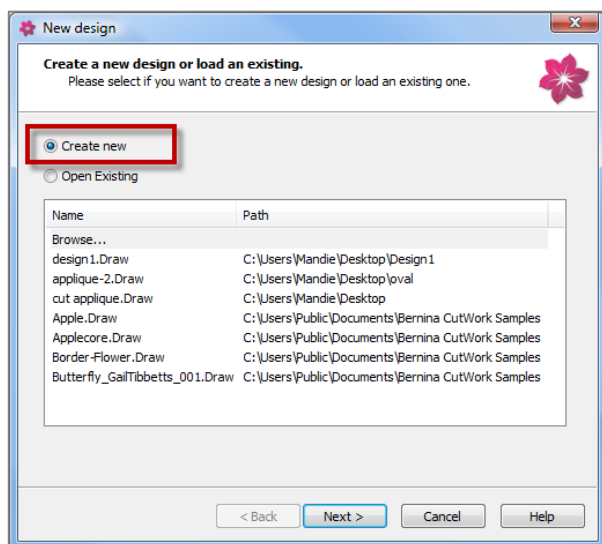
Supplies

- BERNINA CutWork Accessory & Software
- Artwork Design - HApp1.cmx - Download file provided with project
- BERNINA Embroidery Machine compatible with the CutWork Accessory
- OESD Fuse & Fix Stabilizer
- OESD Heavyweight Tear Away Stabilizer
- Fabric-
 - 1- 10inch square Quilt block
 - 1- 8 inch square Appliqué shape
- OESD Isacord Machine Embroidery Thread

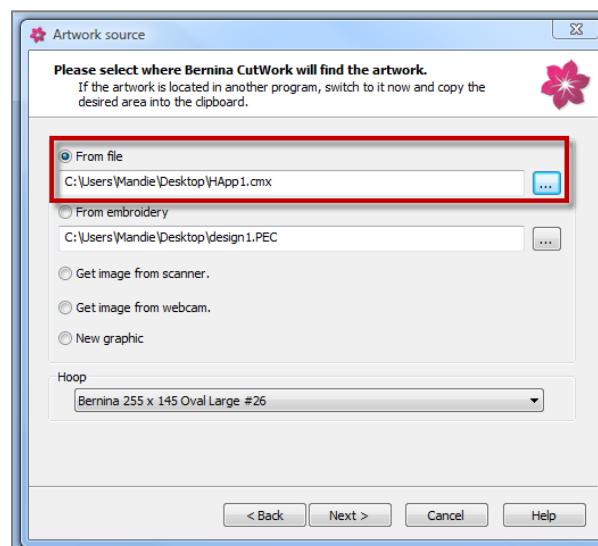


Creating the Cutwork Appliqué

The first step is creating the appliqué design for the cutwork tool to pre-cut.

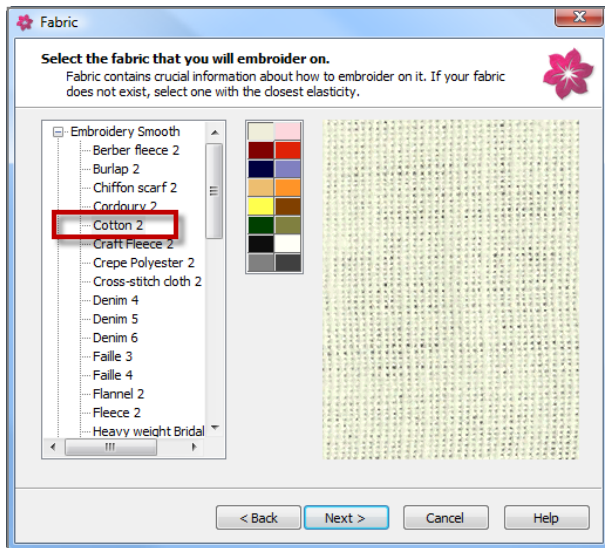


- Start the **BERNINA CutWork** application by double clicking on shortcut icon.
- Select the *Create new* option and click *Next>*.

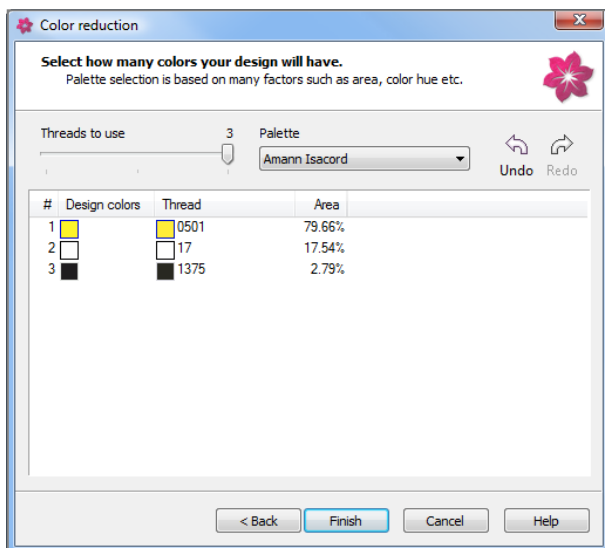


- The *Artwork Source Dialog* will appear. Select the *From File* and browse your computer to find the file **HApp1.cmx** (that you have downloaded and unzipped)
- Select the hoop size for cutting and embroidery. For the Hawaiian Appliqué, select the *Bernina 255 x 145 Large Oval* (or larger size). Click *Next>* to continue.

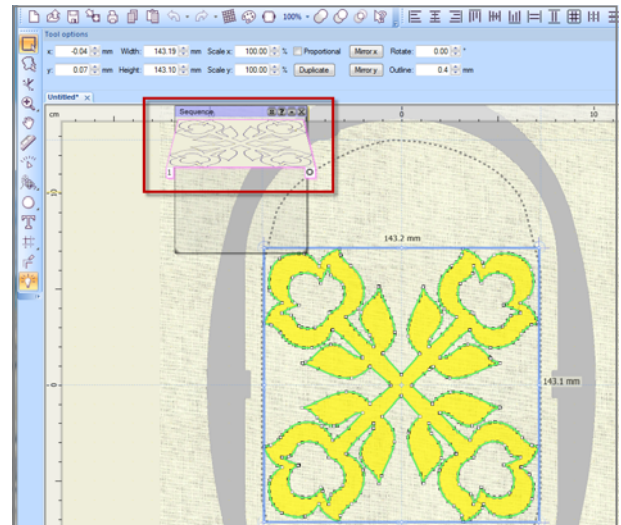
Creating the Cutwork Appliqué, continued



- The *Fabric* dialog box will appear. Select the fabric that is similar with the one you will actually use to embroider the design. Select the *Cotton 2* fabric. Click *Next*.

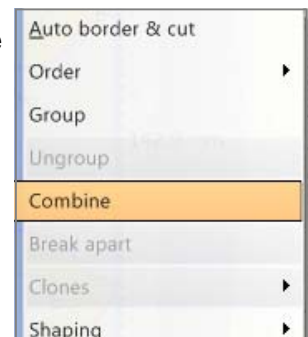


- The *Color Reduction* dialog box will appear.
- Click on the dropdown arrow of the *Palette* menu and select the thread palette *Amann Isacord* or one of your choosing.
- Click *Finish* to end the process and convert the imported design.



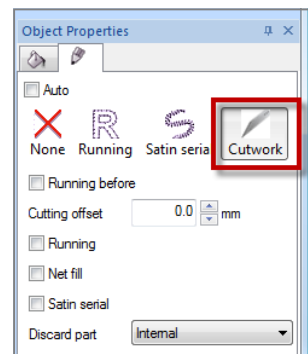
- Select the stitch areas by selecting the design in the *Sequence Manager*.
- In the highlighted area of the design, *Right* click to activate the drop down menu.

- Select *Combine* from the options.

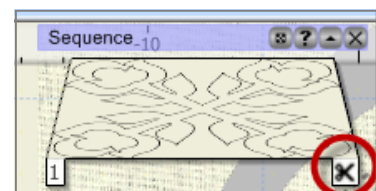


Note: This is useful for making multiple cutwork objects into a single object.

- In the *Object Properties* tab, Select the *Cutwork* option for *Outlines*.

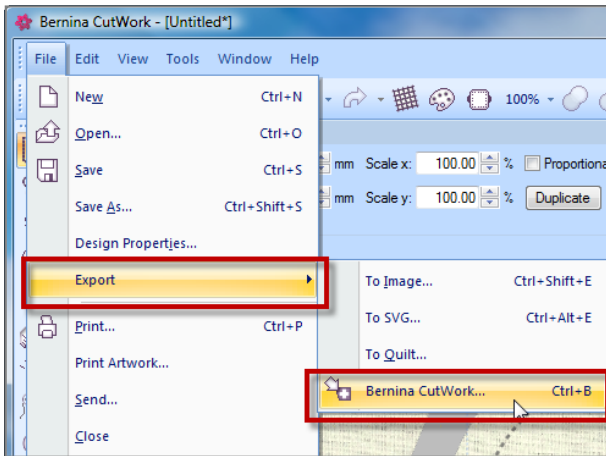


- The *Scissor* icon will appear for the design in the *Sequence Manager*.



Exporting Cutwork Design

The design is ready to export to the embroidery machine to pre-cut the Hawaiian Appliqué.

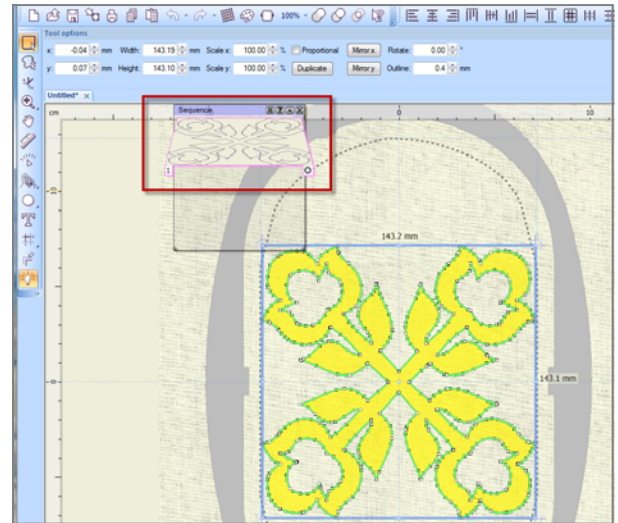


- Select *File* menu. Select and expand the *Export* submenu and select the *BERNINA CutWork...* option.

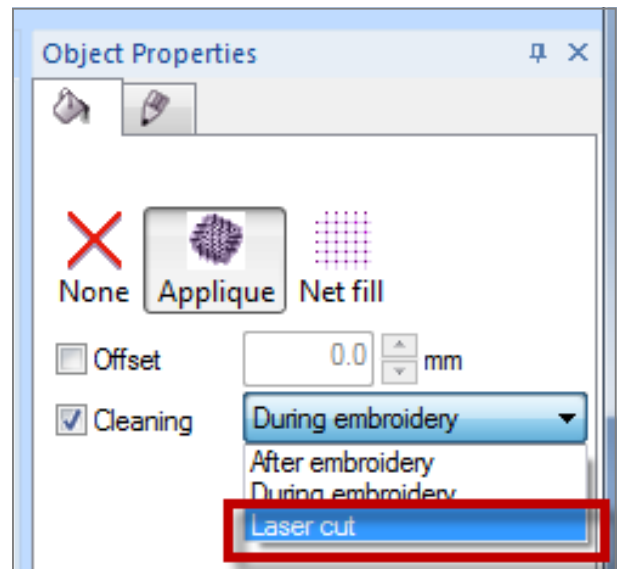


- The *BERNINA Device Selection* dialog box will appear. Select the *BERNINA Machine* where you wish to save the design.
- Note: The BERNINA CutWork Software saves the cutwork design to the BERNINA machine you have selected for export in the file format supported by the selected BERNINA machine.

Creating the Embroidery Design



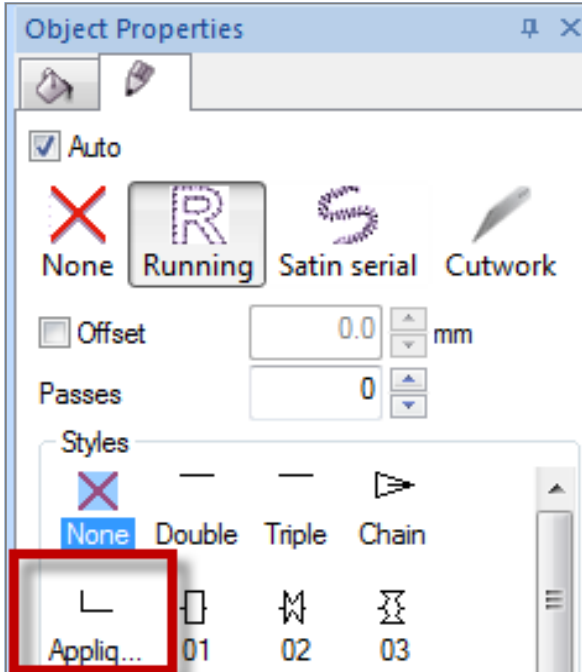
- Select *Undo* to remove the scissor icon.



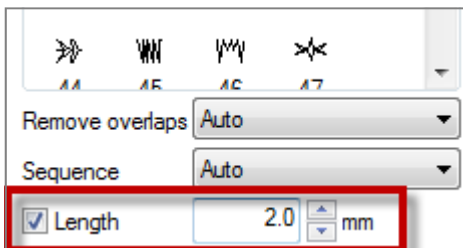
- In the *Object Properties* dialog box, Select the *Fill* tab. (Icon resembles a paint bucket.)
- Select *Appliqué*.
- Place a checkmark in the *Cleaning Option*.
- Select the *Laser Cut* option because a pre-cut appliqué is being used.

Creating the Embroidery Design, continued

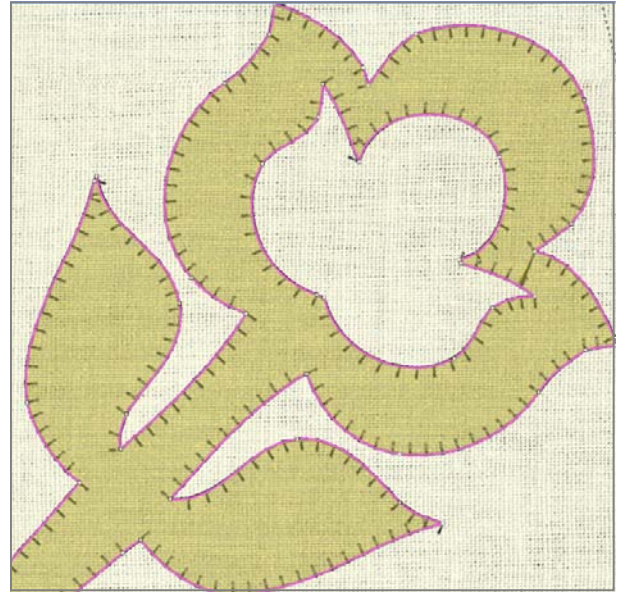
The next step is to specify which stitch you would like to use to affix your appliqué.



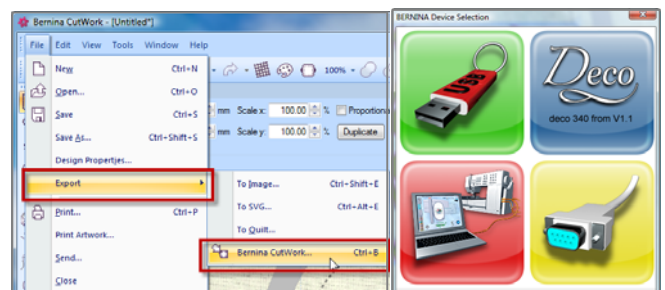
- Select the *Outline Area Properties* tab from the *Object Properties* dialog box. (Icon resembles a pencil).
- From *Styles*, select *Appliqué Stitch* on the second row, first selection. (also called blanket, buttonhole, or “E” Stitch)



- Select to *adjust the stitch* by placing a *checkmark* in the *Length* option. Adjust the *Length* to 2.0 mm.



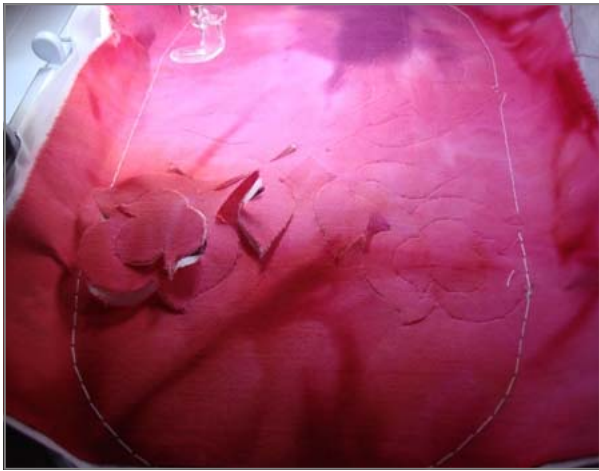
- To Preview the stitches, zoom in to the design, and hover your cursor over the *Fabric Fill* area.
- Select *File > Save As*. The *Save As* dialog box appears. From the dropdown arrow in *Save In*, choose a location to save the design.
- Save the design as *Hawaiian Applique* and choose the *Type of File*, such as *.draw*.
Note: If you want to have access to and edit your designs with BERNINA CutWork, always save them in *.draw* format.
- The design is ready to export for stitching.



- Select *File* menu. Select and expand the *Export* submenu and then select *BERNINA CutWork...* option.
- The *BERNINA Device Selection* dialog box will appear. Select the *BERNINA Machine* where you wish to save the design.
- *Note:* The BERNINA CutWork Software saves the cutwork design to the BERNINA machine you have selected for export in the file format supported by the selected BERNINA machine.

Creating and stitching the Hawaiian Quilt Block Appliqué

- To prepare your appliqué fabric for cutting – Iron OESD Fix & Fuse to the back of the fabric to be pre-cut with the appliqué shape.
- Hoop a single sheet of OESD Medium Weight Tear Away Stabilizer
- *Tip:* Baste the appliqué fabric and stabilizer combination to the hooped tear away using a basting box.



- Prepare the machine for using the BERNINA Cut-Work Tool; insert the cutwork accessory. Following the prompts on the BERNINA Embroidery Machine, cut out the appliqué shape with the Cut-work Tool. The BERNINA CutWork Tool allows multiple layers to be cut at one time!
- Once cutting the appliqué shape is completed, hoop the quilt block fabric with one layer of Tear Away to stabilize.
- Prepare the machine for stitching; insert the needle and thread.

- Stitch out the first color which is the *Placement Line* onto the fabric.



- Remove the paper backing from the back of the appliqué shape. Position the appliqué shape onto the block using the stitched placement line as a reference.
- Continue stitching the 2nd color of the design to complete embroidery appliqué. WOW!



Visit
www.bernina.com
 For additional projects
 and information.

