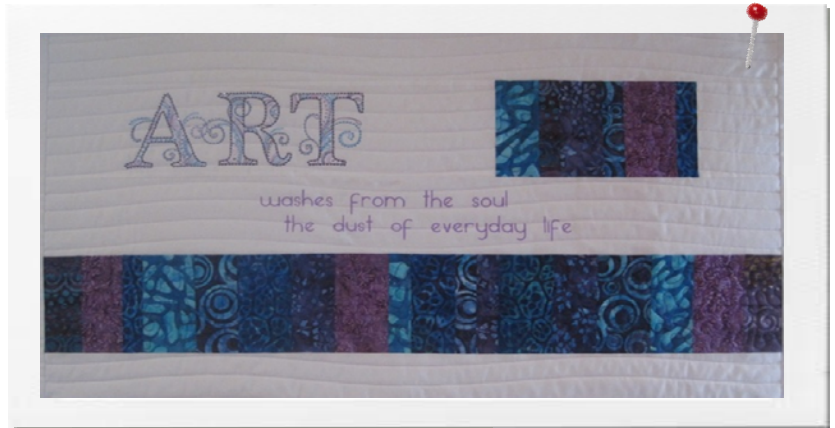




# Let's Quilt It...

## Conversational Art Quilt

### Pantograph



#### Select and Sew Pantograph

- From the **Main Menu**
- Touch **Pantograph** under the “**Select & Sew**” .
- Select the **Continuous Line** tab
- Touch **SingleWave.gpf** from menu of patterns.
- If prompted, **Set Safe Area** by following the instructions in the lower left corner on screen.

#### PantoStacker open:

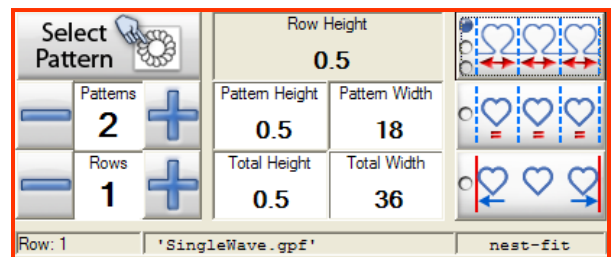
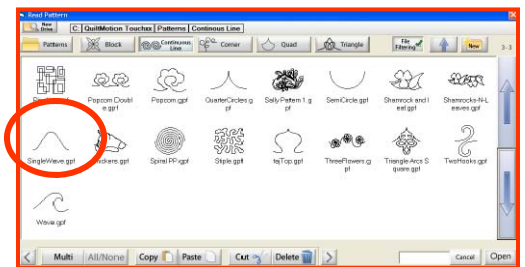
- Enter settings
  - **Patterns-2**
  - **Rows-1**
  - **Pattern Height- 0.5**
  - **Total Height- 0.5**
  - **Total Width-36** (or total width of quilting)

- Select “**Quilt**” on lower right of screen
- QuiltMotion Touch screen opens
- Click on **Sewing Information Box** or **Settings** and select:
  - **Placement-Two Points**
  - **Fill Method-Stretch**

#### Marking the quilt top:

- Mark along both sides one inch marks on both sides.
- Using marks on each side of the quilt to place rows to quilt one at a time.

*Instructions for the DesignWorks Conversational Art Quilt project are available at [bernina.com](http://bernina.com).*



Placement	Two Points
Fill Method	Stretch
Pattern Height	0.5
Pattern Width	36
Stitch Per Inch	10
Sew Speed	Medium

