

BERNINA
Q SERIES



CLICK & CREATE

Quilt-As-You-Go on the Q Series with Frame

*Written by: Denise Jones, BERNINA Educator,
Quilting and Longarm Specialist*

Tools for Success

MACHINE & ACCESSORIES

- BERNINA Q 24 or Q 20 with Frame
- BERNINA Q Series Channel Locks
- BERNINA Ruler Work Kit (optional)

FABRIC & NOTIONS

- Jeans Needle 90/14
- Cuddle/minky quilt fabric strips (Sample shown uses the Crazy 8's Cuddle Kit by Shannon Fabrics)
 - 7 strips of fabric 10" X WOF (Width of Fabric)
- 2-1/3 yards of backing fabric
- 1/3 yard of binding fabric
- 60" X 78" batting
- Your favorite machine quilting thread

CUTTING DIRECTIONS

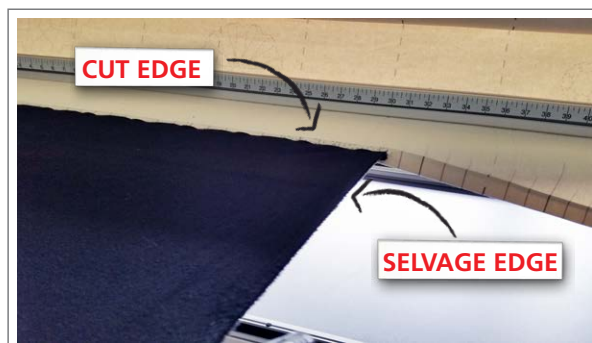
- Keep 4 strips 10" X WOF
- Subcut 2 10" strips into 4 strips 5" X WOF
- Subcut one 10" strip into 4 strips 2-1/2" X WOF
- Fussy cut the 7th strip if needed (elephant strip shown in sample) or leave at 10" X WOF
- Binding
 - Cut 5 strips 2" wide

Machine Set-up

PREPARE THE MACHINE

- Clean and oil the machine before you begin each project!
- Set the bobbin tension with the BERNINA Bobbin Tension Gauge

LOAD THE FRAME



- Load frame with the cut edge of the fabric attached to the leaders and selvage edges along the side for clamps to attach to with the right side facing down.
- Firm up the backing making sure not to stretch it.
- Place batting on top of backing.
- Set Stitches Per Inch to 8 on the Q Series machine.
- Quilt the project using a 1/2 inch seam allowance.

Project Instructions

Layout the strips in a pleasing manner prior to quilting and have them prepared to stitch in the order you desire.



- With batting on top of backing use **BSR3** to create a straight basting line across the top. Select 4 SPI. Use the Horizontal Channel Lock (HCL) to lock machine on carriage along the x-axis. This straight stitching line will hold the two layers together and serve as a straight line to place the first strip.



- Lay first strip, right side up, on batting and backing with the top of the strip even with the basting line. Change to **BSR2** and SPI to 8 and stitch down top edge of strip, continuing to use the HCL. Pin to secure.

Project Instructions



- Lay the second strip on top of the first strip, right sides together, making sure the nap of the fabric is going in the same direction. Pin to secure.



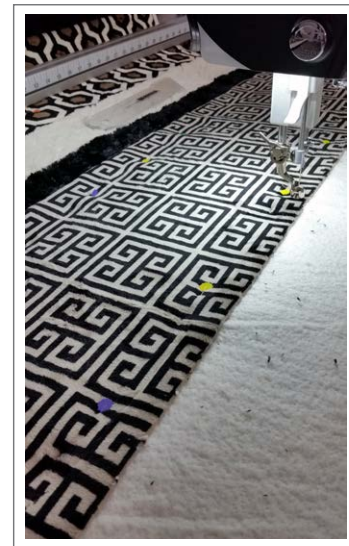
- Move machine so that you can stitch the two strips together through the batting and backing at the same time. Lock the HCL and stitch across.
- Fold second strip down so it is now face up and pin to secure.
- Quilt the first strip if desired.
- Lay third strip on top of second strip and pin to secure.
- Move machine so that you can stitch strips together through the batting and backing. Lock the HCL and stitch across.
- Fold third strip down so it is now face up and pin to secure.



- Quilt second strip if desired.
- Place the fourth strip on top of the third strip. Pin to secure.



- Move machine so that you can stitch strips together through the batting and backing. Lock the HCL and stitch across.
- Fold fourth strip down so it is now face up and pin to secure.
- Quilt the third strip if desired.



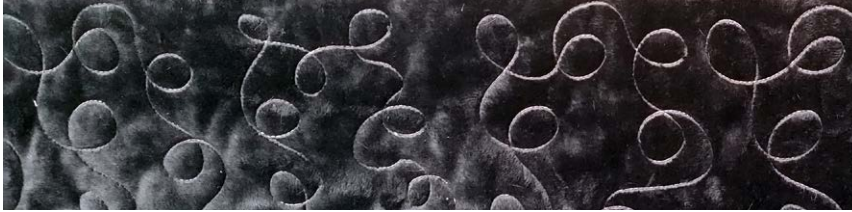
- Repeat this process until the last strip is stitched on and flipped down so that it is facing up. Stitch across the bottom of quilt using channel locks as before. Quilt if desired.
- Remove from the frame and square up the quilt.
- Stitch binding on using 1/2 inch seam allowance. Fold over edge of quilt and hand stitch or machine stitch in place to finish.

Quilting Ideas and Tips

Each strip can be quilted differently or the same.



STIPPLE



LOOPS



GEOMETRIC SHAPES

- If you choose not to quilt each strip - it is okay!
- If using BERNINA Q-matic Automation Software, pick a few pantograph designs and quilt each strip.

Tips for working with cuddle/minky fabric:

- Make sure the nap of the cuddle/minky is going in the same direction. This will make your quilt feel more snuggly.
- A little longer stitch length will help your quilt lay flatter, try using 6-8 stitches per inch.
- Always stitch the same direction. There is a little movement of the top fabric and you want it to move the same on every strip.
- Pins are your friends. Don't be shy with the pins; the more secure, the better the quilt.



- With the Q 24 you can always move the handle out of your way when needed.



- To help stabilize the strips you can use your hand or use the BERNINA Ruler Work Kit.