

BERNINA
8 Series

The Owlivia Quilt

Created by Nina McVeigh



The Owlivia Quilt is created with fabrics from the Benartex - Owlivia Fabric Collection as well as with embroidery designs from the BERNINA Exclusive Design Collection with the same name! Using the CutWork Tool to cut the appliques makes the designs so exact and perfect. Enjoy these fanciful designs in their bright and vibrant colors. A welcomed gift for a baby or young child, the Owlivia Quilt is sure to bring delight for years to come.

Supplies

Finished Size:
46" X 61"

Machine & Accessories

- BERNINA Sewing & Embroidery Machine
- Medium Embroidery Hoop
- Large Oval Embroidery Hoop
- Jumbo Hoop (Optional)
- Open Embroidery Foot #20
- Teardrop Embroidery Foot #26
- Dual Feed Patchwork Foot #37/37D or #57/57D
- BERNINA Stitch Regulator #42
- Walking Foot #50
- Bias Binder Attachment #88 (28mm) and Foot #95C
- CutWork Tool & CutWork Stitch Plate
- CutWork/Echo Quilting Foot #44

Embroidery Design Collection

- BERNINA Exclusive Embroidery Collection - Owlivia #21005

Fabrics

Owlivia Fabrics from Benartex*

- 1 ¹/₄ Yd Print Blocks and Inner Border (#2242-22)
- 1 ¹/₄ Yd Print Outer Border (#2242-09)
- ³/₄ yard fabric for binding (#2243-44)
- 3 yards fabric for Backing (#2241-09)
- 2 ¹/₂ Yds Solid White for Blocks and Embroidery
- ¹/₄ Yd of 4 solid colors for appliqué (Pink, Green, Yellow and Orange)

* Prints used in the sample are noted, but other fabrics from this collection and beyond can readily be used to create this charming quilt!



Notions

- 1 ¹/₂ yards of 90" batting
- OESD Hydro Stick Stabilizer
- OESD Poly-Mesh Cut Away Stabilizer
- 3 Packages Steam a Seam Lite 2
- Isacord Embroidery Thread Colors: 5822, 2721, 5833, 2506, 1010, 2830, 0221, 1701, 4122, 0230, 5912, 0015, 0020 or thread to match fabrics
- OESD White Bobbin Thread
- White Cotton Construction Thread
- Small - Leaves Galore Appliqué Template or any scalloped ruler for edge of quilt.
- 1 Package coordinating Jumbo Rick Rack
- 2 Packages coordinating Baby Rick Rack
- OESD Organ Embroidery Needles size #80
- Denim or Microtex needles #70
- Mary Ellen's Best Press

Visit bernina.com

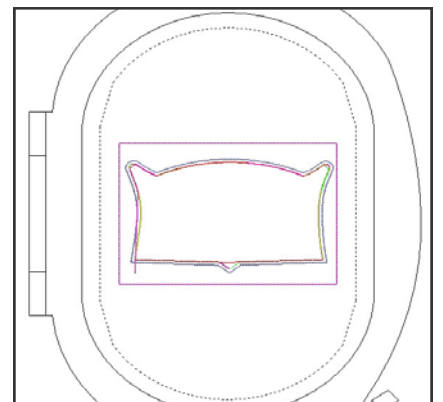
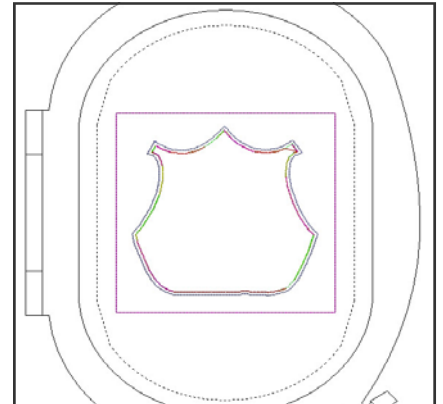
Projects • Webinars • Promotions

Cutting Instructions

- Print for Blocks and Inner Border
 - Cut 13 strips 2¹/₂" wide
 - Set aside 5 strips for inner border
 - From the other 8 strips, cut 117—2¹/₂" squares
- Solid White for Blocks
 - Cut 2—¹/₂ yard strips for embroidery
 - Cut 3—9" strips
 - From these strips, cut 12—9" squares
 - Cut 4 strips 2¹/₂" wide
 - From these strips, cut 52—2¹/₂" squares
- Print for Outer Border
 - Cut 6 strips 6" wide
- Solids for Appliqué (Cutwork)
 - Cut 6" X 9" Pieces
 - Yellow—4 pieces
 - Green—4 pieces
 - Orange—6 pieces
 - Pink—5 pieces
 - White—2 pieces

Cut Appliqué Pieces with the CutWork Tool

- Attach Echo Quilting/CutWork Foot #44 to the machine
- Attach the CutWork Throat Plate to the machine.
- Cut 11 Steam a Seam Sheets in half so you will have 22 pieces that measure 5¹/₂" X 9".
- Prepare Appliqué fabrics by backing each piece with the cut pieces of Steam a Seam.
- Hoop a piece of Hydro Stick in Large Oval Hoop, layer 4 pieces of prepared orange fabric in the hoop. Layer another piece of Hydro Stick on top.
- Attach Hoop to the Machine and select design #21005-02_CWA_A.exp.
- Select the Basting Box for the Large Oval Hoop.
- Stitch out the Basting Box and first thread color.
- Remove the needle and thread and attach the CutWork tool
- Follow the prompts on the screen, turning the blade to the 4 cutting directions cutting out the body of the owl.
- Hoop a piece of Hydro Stick in Large Oval Hoop, layer 2 pieces of prepared orange fabric in the hoop. Layer another piece of Hydro Stick on top.
- Attach the Hoop to the Machine and select design #21005-8_CWA_B.exp.
- Continue as first design.



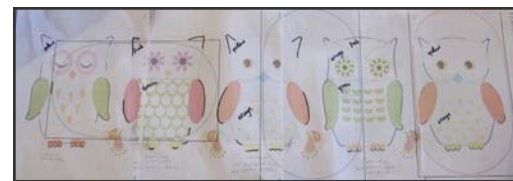
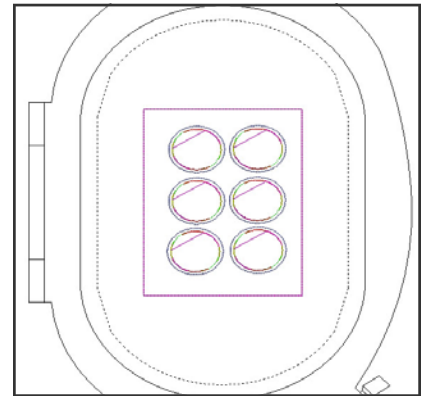
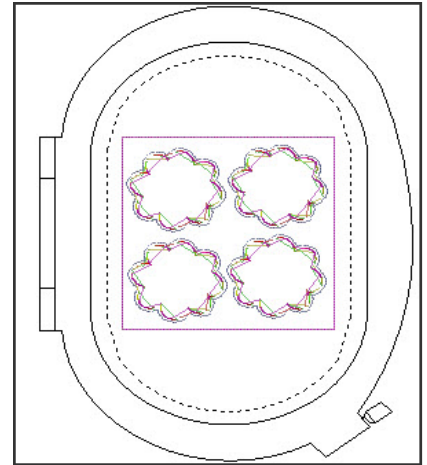
Cat Appliqué Pieces with the CatWork Tool

continued...

- Follow the CutWork steps for the rest of the designs listed below:
 - #21005-04_CWA_A.exp with 2 pieces of green fabric.
 - #21005-06_CWA.exp with 2 pieces of yellow fabric.
 - #21005-08_CWA_A.exp with 2 pieces of green fabric.
 - #21005-02_CWA_B.exp placing two designs in the hoop with 2 pieces of yellow fabric.
 - #21005-04_CWA_B.exp and #21005-08_CWA_C.exp in the same hoop with 2 pieces of pink fabric
 - #21005-17_CWA_A.exp placing 4 designs in the hoop with 3 pieces of pink fabric
 - #21005-17_CWA_B.exp placing 6 designs in the hoop with 2 pieces of white fabric

Embroider the Blocks

- All embroidery is done on the cut pieces of white fabric. Spray the white fabric pieces with Best Press and iron.
- All embroidery is done with two layers of OESD Poly Mesh Cut Away Stabilizer.
- Begin with ½ yard strips for the row of owls. Mark a base line for the owls the length of the fabric about 6" up from the edge of the fabric.
- Open each owl design and position in a row 3/4" apart as the photo shows.
 - #25005-06
 - #25005-04
 - #25005-02
 - #25005-08
 - 325005-02
- This can be done in any basic software program, BERNINA Editor Lite, BERNINA Editor Plus and BERNINA Designer Plus.
- Print out the design and tape together using the registration marks on the paper.
- If using BERNINA Embroidery Software 6 - Designer Plus, use the Jumbo Hoop and Multi Hooping Icon.
- Otherwise the Large Oval Hoop may be used to embroider each individual Owl.
- Insert a #80 Organ Embroidery Needle.
- Embroider the owls using the corresponding cut out appliqué designs.



Embroider the Blocks continued...

- Using the Best Press, spray and iron the 9" squares.
- Hoop each square in the Medium Hoop and embroider the squares with design #25005-17 using the corresponding cut out appliqué pieces.
- Remove the stabilizer from the back of all embroidery.
- Trim squares to 6 1/2" centering the floral motif in the square.
- Trim the Owl Embroidery to 30 1/2" X 8 1/2" making sure the bottom of the owls are 5/8" from the cut edge.



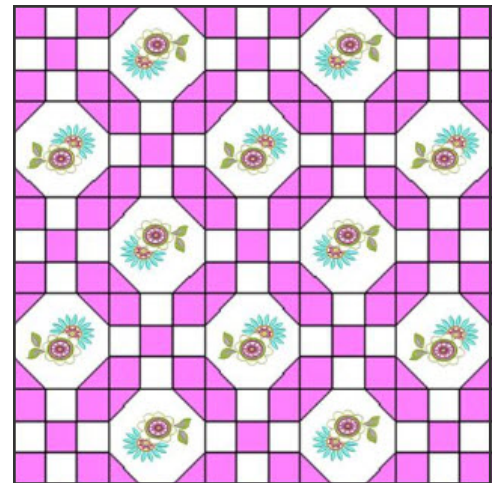
Piecing the Blocks

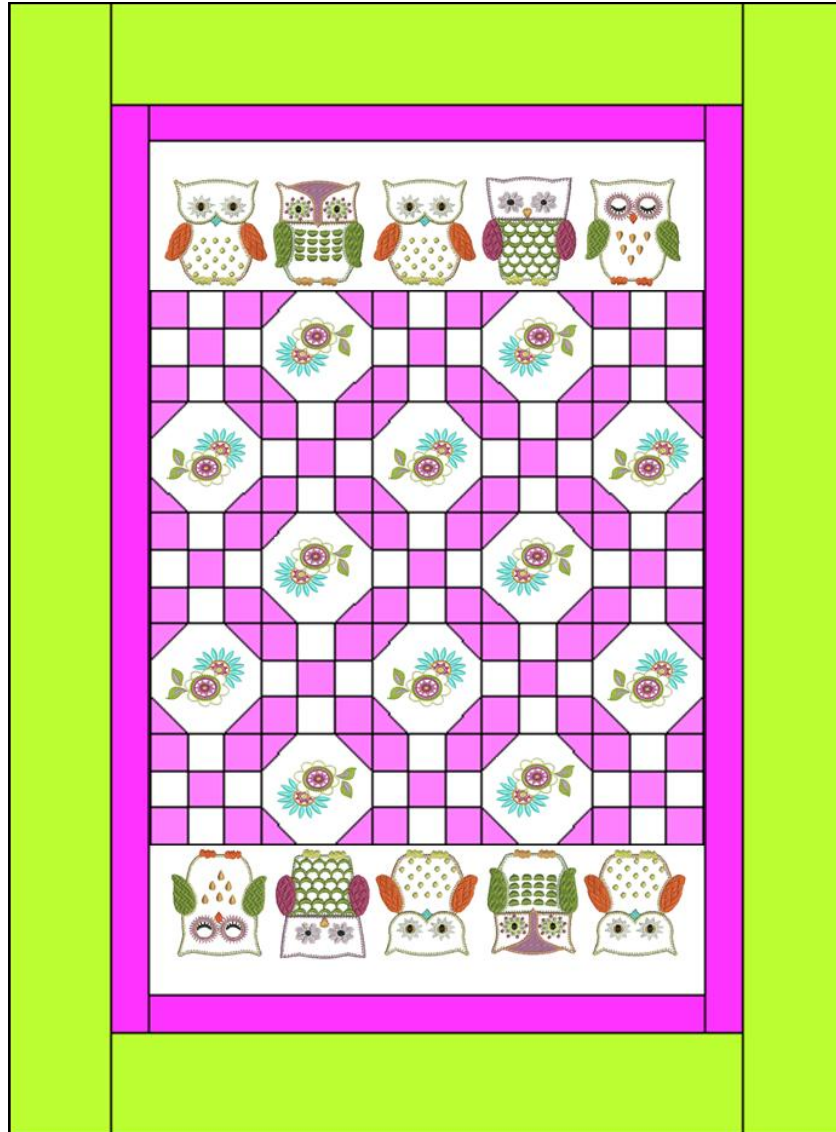
- Go to Sewing and attach the Patchwork Foot #37/37D or the Patchwork Foot with Guide #57/57D. Insert a #70 Microtex needle.
- Piece 3 cut squares making 26 sets with the white square in the center.
- Piece 3 cut squares making 13 sets with the print square in the center.
- Piece these sets together making 13 blocks as pictured.
- Place a print square on each corner of the embroidered square and sew across diagonally. (A line may be drawn on the square and then sew on the line) Trim off the excess leaving a 1/4" seam allowance. Press outward.



Putting the Quilt Together

- There is a total of 25 squares. Seam them together in 5 rows of 5 blocks alternating their placement for the center of the quilt.
- Place a row of embroidered owls at opposite ends.
- Using the Inner Border Strips, place a 30 1/2" strip at each end. Seam the other 3 strips together with mitered seams. Cut two strips 50 1/2" and seam them to the sides of the quilt.
- Use the 6" outer border strips to seam a 34 1/2" strip to the top and bottom of the quilt. Seam together using a mitered seam, two 6" strips for each side of the quilt. Cut the side borders to 61 1/2". Seam them to the side of the quilt.





Quilting the Quilt

- The nine patch blocks in the center of the quilt were quilted with an elongated running zig-zag stitch (stitch #4).
- Use free-motion stippling for the background of the embroidered blocks (owls and flowers).
- Place the Jumbo Rick Rack at the bottom of each Owl Border. Free motion in place, tucking the raw edges into the border seam.



Quilting the Quilt continued...

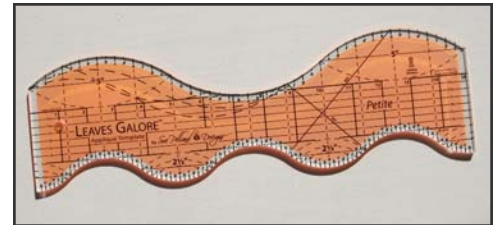
- Quilt the first border with the same wavy stitch #4 using the Walking Foot. Stitch 5 rows in the border.
- Free Motion the Outer Border with the BERNINA Stitch Regulator.

Finishing the Quilt

- A wavy edge was created using the bottom edge of the small Leaves Galore Ruler. Any wavy ruler may be used but almost all rulers will require a little “fudging”. It is best to start at the corner and work toward the center of each border. Always draw the scallop on the border first.
- Once the scallop edge is drawn on the edge of the quilt, using a straight stitch, stitch on the drawn line. Then cut the border very close to the stitching.

Binding

- The 1/4” (28mm) Binder Attachment #88 was used to bind the quilt. Attach the Binder and Binder Foot #95/95C to the machine.
- Cut enough bias strips 1 1/16” wide to go around the outside edge of the quilt.
- Seam binding strips with a mitered seam and trip to 1 1/8”
- Insert the binding into the binder and bind.
- Attach the Open Embroidery Foot #20 to the machine.
- Select the zig-zag stitch.
- Set the width and length to just go over the baby piping and stitch it over the inside edge of the binding.
- Enjoy!



BERNINA Exclusive Embroidery Collections

Visit bernina.com to preview the complete line of embroidery collections!

