

# Appliqué Instructions

There are two different methods to appliqué. We have included both below. Both Methods are equally effective. The choice of method is a personal one.

## PATTERN METHOD

1. Print out the necessary pages from the PDF of the appliqué pattern(s).
2. Mark the right side of the pattern pieces so you will know which direction to lay the pattern on the fabric.
3. Lightly spray the wrong side of the pattern pieces with temporary spray adhesive and allow it to set for a few minutes.
4. Place the pattern pieces on the right side of the fabric and carefully cut them out. **PHOTO 01**
5. Sew the guide stitch on your hooped fabric. **PHOTO 02**
6. With the paper still stuck to the right side of the appliqué fabric, spray the wrong side of the fabric with temporary spray adhesive.
7. Place the fabric inside the sewn guide stitch so that it matches the stitching line then remove the paper pattern. **PHOTO 03**
8. Sew the tackdown. **PHOTO 04**
9. Sew the remainder of the design and repeat for any remaining pieces. **PHOTO 05**

NOTE: The patterns are sized for the designs as they are made. If you resize the design, you will need to resize the pattern the same amount. You can print out the pattern at the normal size and then copy it on a copy machine at the changed size, i.e. resize the design to 80%, resize the printed pattern to 80%.

TIP: When printing the patterns, make sure that the "Fit to page" option is UNCHECKED in the Print Dialog Box. If the option is checked the printed patterns will not be actual size.

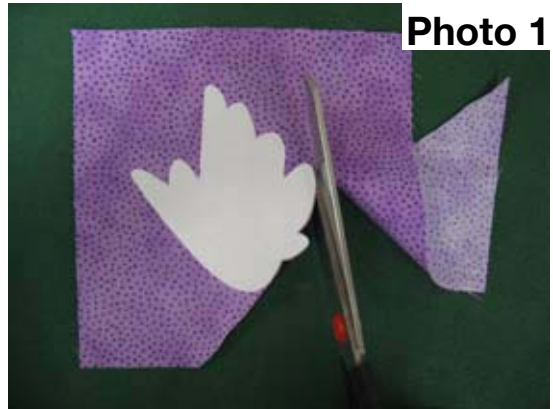


Photo 1



Photo 2

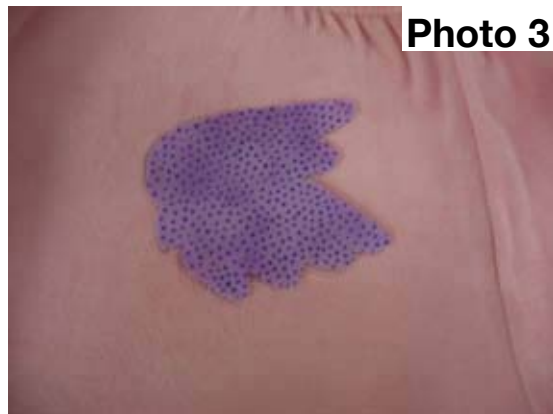


Photo 3



Photo 4



Photo 5

## CUT IN PLACE METHOD

1. Hoop your fabric and backing.
2. Sew the pattern/placement. **PHOTO 06**
3. Place a piece of appliqué fabric over the pattern/placement so that it is completely covered.
4. Sew the trim stitch/tackdown.
5. Carefully cut away the excess appliqué fabric.

### PHOTO 07

6. Sew the remainder of the design and repeat for any remaining pieces. **PHOTO 08**

