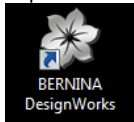


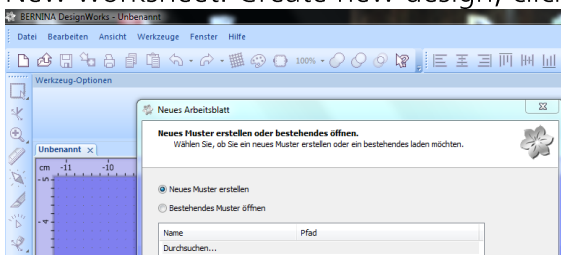
i-Tips DesignWorks: Creating a collar design

Here you'll find the step-by-step instructions for your DesignWorks software. You have downloaded the following files in ZIP format: 5712_Motiv; 5712_PW_Vorlage_Kragen; and for checking, our finished design 5712_PW_Kragen_rechts. If you only have the PaintWork Tool but not the software, you will also need the file 5712_Kragen_rechts.

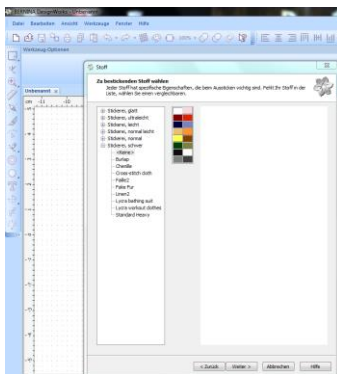
Open DesignWorks:



New worksheet: Create new design, click 'Next':



Select background fabric, click 'Next':



Search for desired image (JPG,PNG,TIF), select and open:

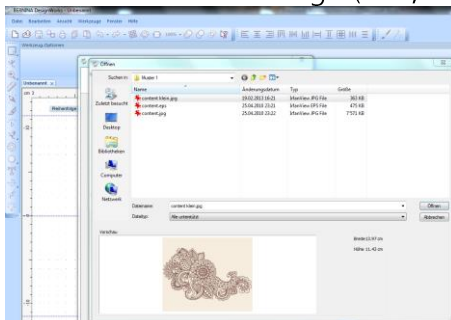
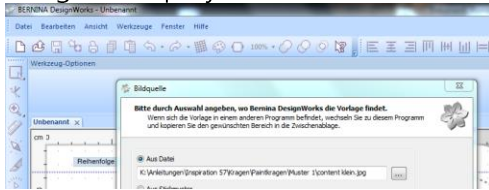


Image is displayed. Click 'Next':



'Vectorize' and 'Next':

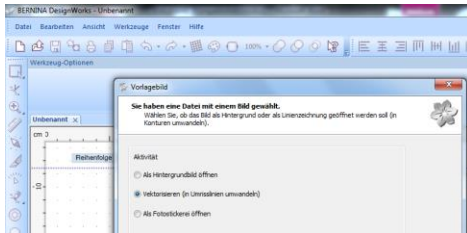


Image is vectorised while the green bar below shows progress:

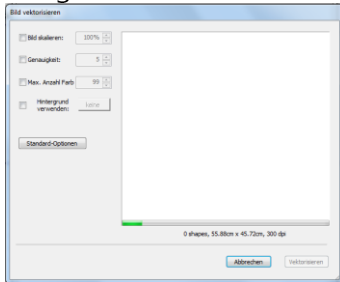
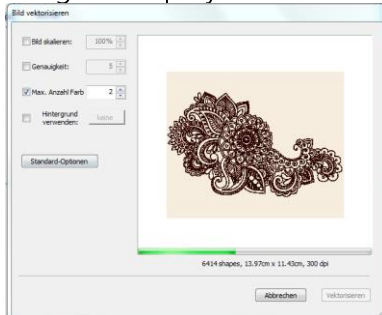
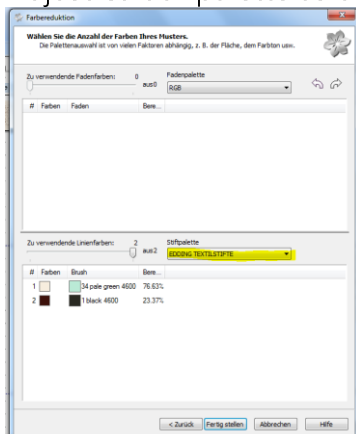


Image is displayed. Reduce colour to 2 and revectorise:

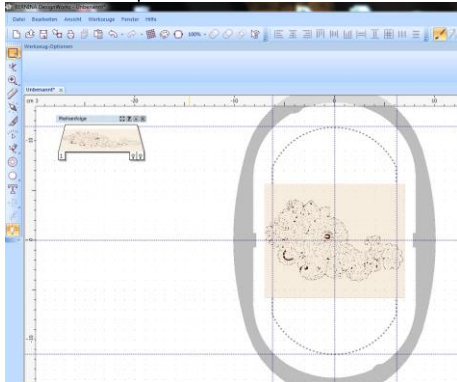


Click on 'Vectorize'.

Adjust colour palette as desired and complete:



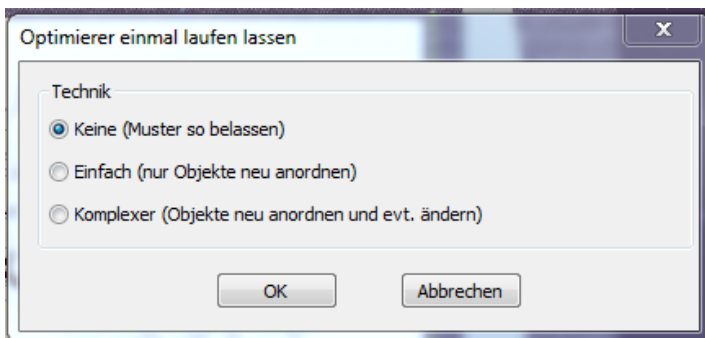
Motif is opened:



Select 'Autom. sequence' in toolbar:



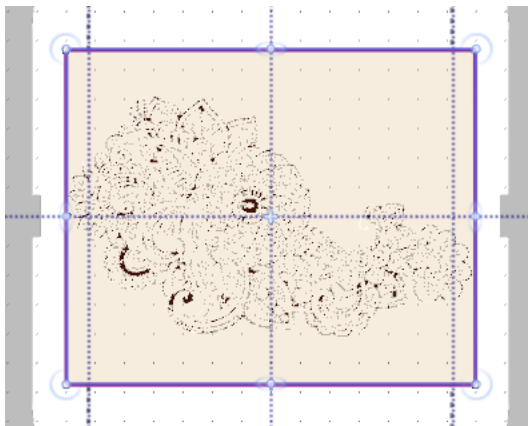
'Run optimizer once' window appears. Select 'None'

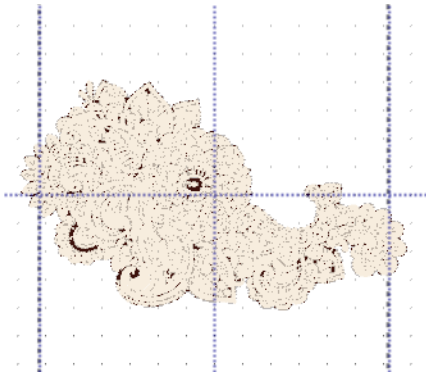


In the menu bar, hide the background image:

Select 'View', 'Background image', 'Hide'

Click on background and press 'Delete' to erase. Alternatively, click on No. 1 in the 'Sequence' window:





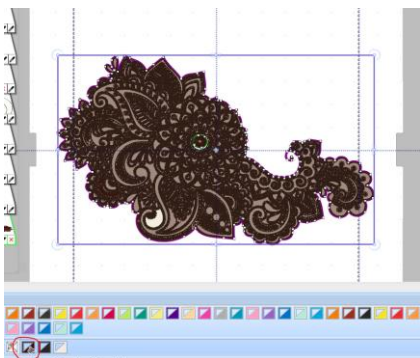
In Color Palette, right-click on the bottom right-hand corner in the colour white. Select 'Select by', 'Fill color'.



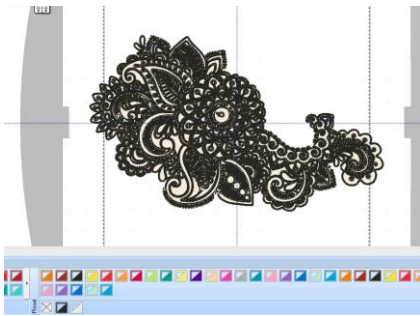
In Color Palette, select a colour (black) and click on top left-hand corner (outline):



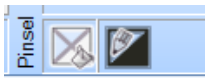
In Color Palette, right-click on the bottom right-hand corner in the colour brown. Select 'Select by', 'Fill color':



Delete:



Delete white fill: Ctrl + A ('Highlight all') and left-click in the Color Palette in the bottom right-hand corner of the crossed square (i.e. 'No fill').



Select 'Autom. Sequence' in the toolbar:

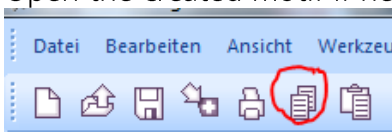


To check, select 'Slow redraw' in the toolbar and clicking on 'Start':

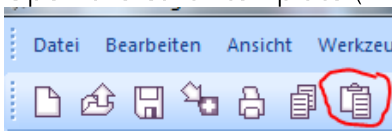


Save file.

Open the created motif if necessary, and **copy**.



Open the collar template (DRAW file) and insert the Paint motif:



Fit motif into collar outline, i.e. mirror horizontally and rotate. If wished, check once more with 'Slow redraw'. Save collar, renaming it e.g. 'Collar right side'.

For the left side of the collar, copy the file again and insert in a new file. Mirror motif and save as 'Collar left side'.