

10 x 10 cm

Für Körpergröße/ for height/ pour la taille 168 cm:

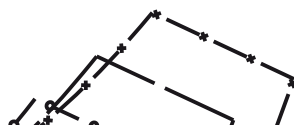
| Größe/ Size/ Taille | 34 | 36 | 38 | 40 | 42 | 44 | 46 | |
|---|----|----|----|----|----|-----|-----|-----|
| Oberweite/ Bust/Poitrine | | 80 | 84 | 88 | 92 | 96 | 100 | 104 |
| Taillenweite/ Waist/Taille | | 64 | 67 | 71 | 75 | 79 | 83 | 87 |
| Hüftweite/ Hip/Hanche | | 90 | 93 | 96 | 99 | 102 | 105 | 108 |
| Vord. Taillengl./ Front waist length/ Longueur taille devant | | 42 | 43 | 44 | 45 | 46 | 47 | 48 |
| Rückw. Taillengl./ Back waist length/ | | 41 | 41 | 41 | 42 | 42 | 42 | 42 |

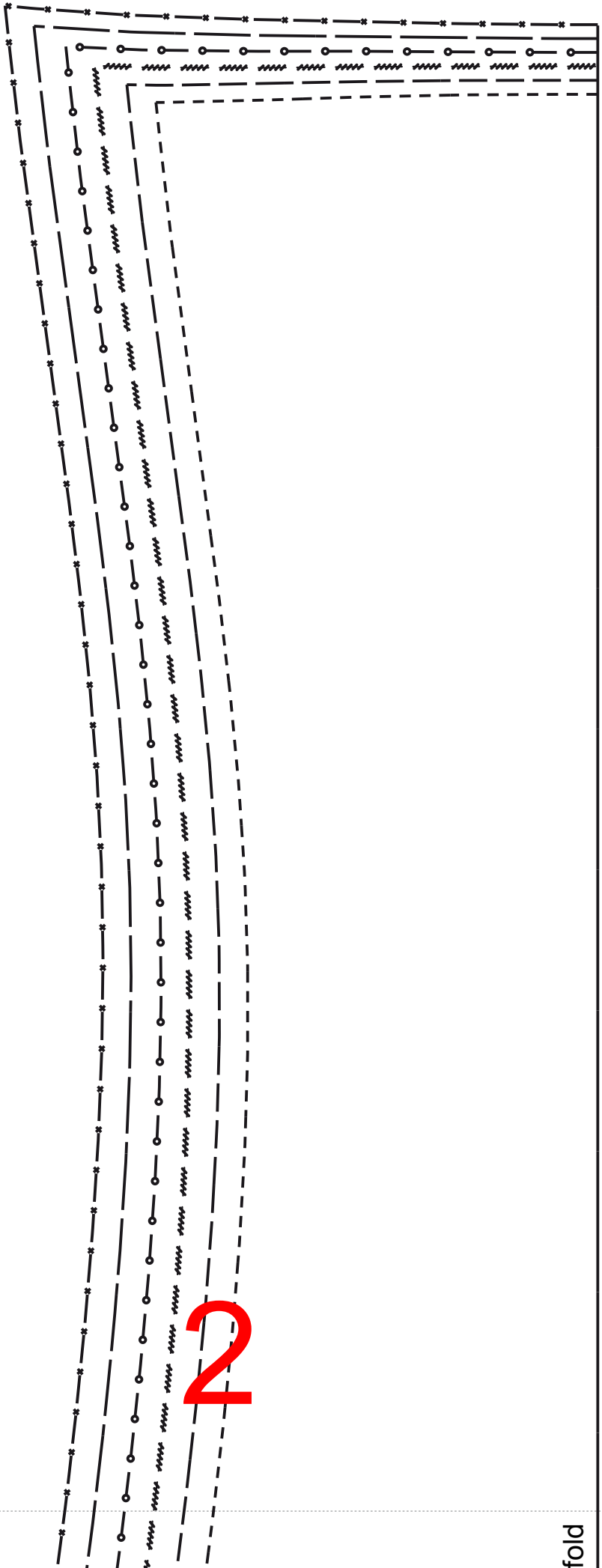
Für Körpergröße/ for height/ pour la taille 66 Inch:

| Größe/ Size/ Taille | 34 | 36 | 38 | 40 | 42 | 44 | 46 | |
|---|----|------|------|------|------|------|------|------|
| Oberweite/ Bust/Poitrine | | 31,5 | 33 | 34,6 | 36,2 | 37,8 | 39,4 | 40,9 |
| Taillenweite/ Waist/Taille | | 25,2 | 26,4 | 28 | 29,5 | 31,1 | 32,7 | 34,3 |
| Hüftweite/ Hip/Hanche | | 35,4 | 36,6 | 37,8 | 39 | 40,2 | 41,3 | 42,5 |
| Vord. Taillengl./ Front waist length/ Longueur taille devant | | 16,5 | 17 | 17,3 | 17,7 | 18 | 18,5 | 18,9 |
| Rückw. Taillengl./ Back waist length/ | | 16 | 16 | 16 | 16,5 | 16,5 | 16,5 | 16,5 |

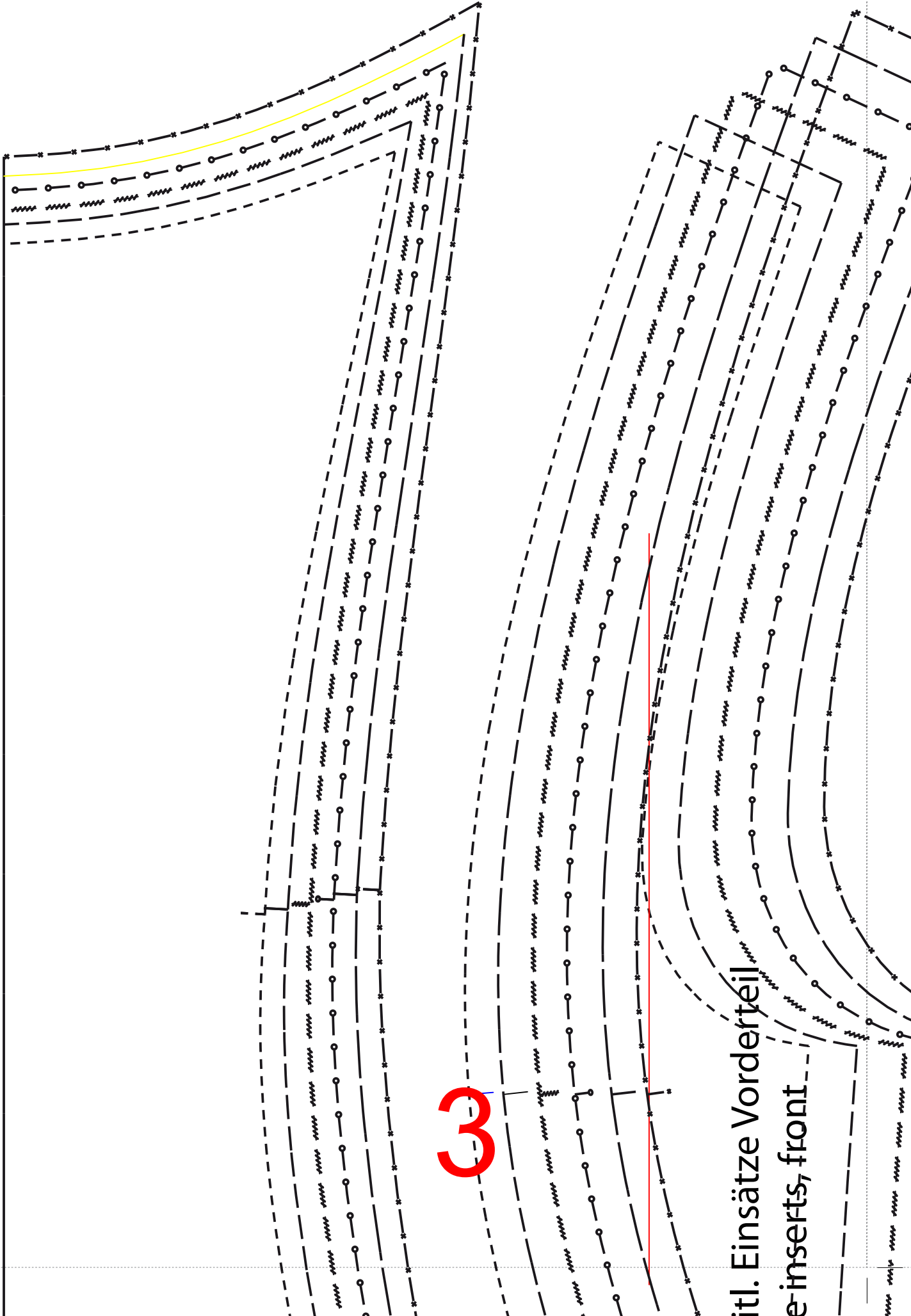
Legende/Legend/ Légend

| | | |
|--------|----------|----|
| Größe/ | ----- | 34 |
| Size/ | ----- | 36 |
| Taille | ~~~~~ | 38 |
| | —○—○—○—○ | 40 |
| | ----- | 42 |
| | —*—*—*—* | 44 |
| | ===== | 46 |





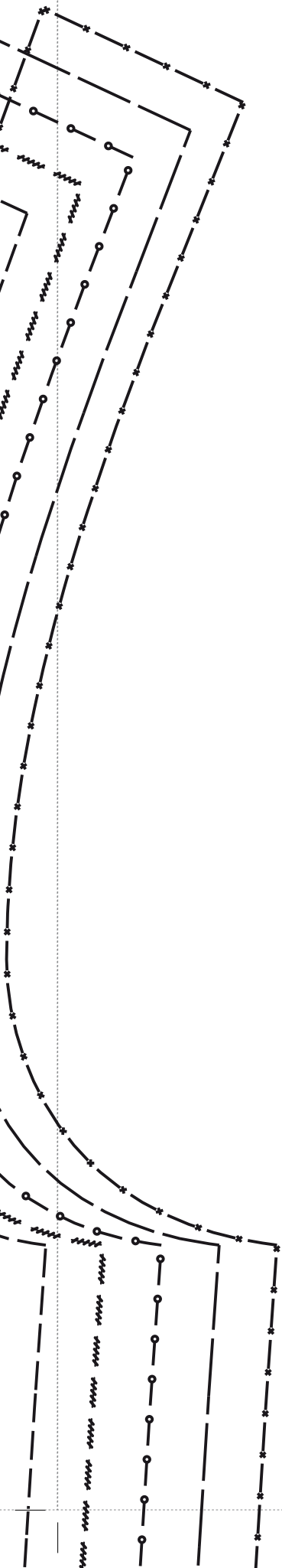
fold



3

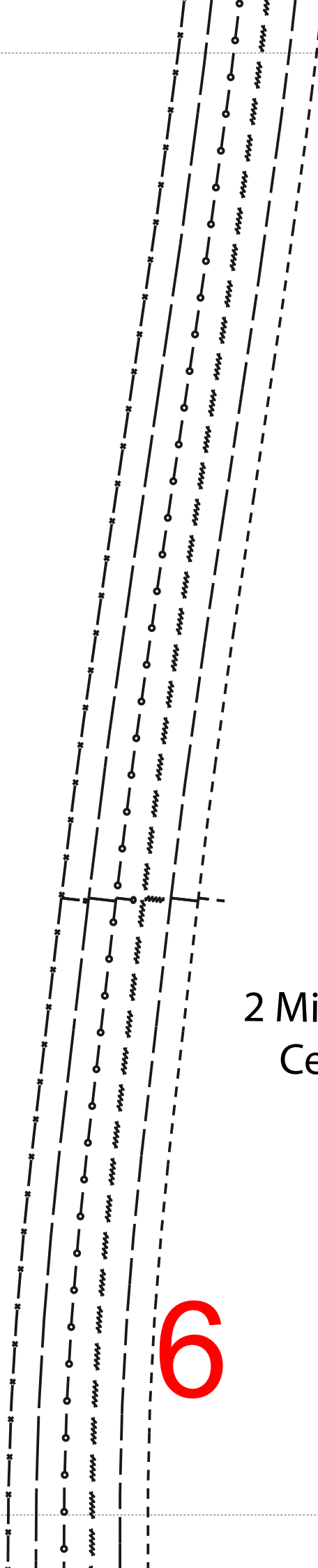
titl. Einsätze Vorderteil

e-inserts, front



4





6

2 Mittleres Rückenteil
Centre back

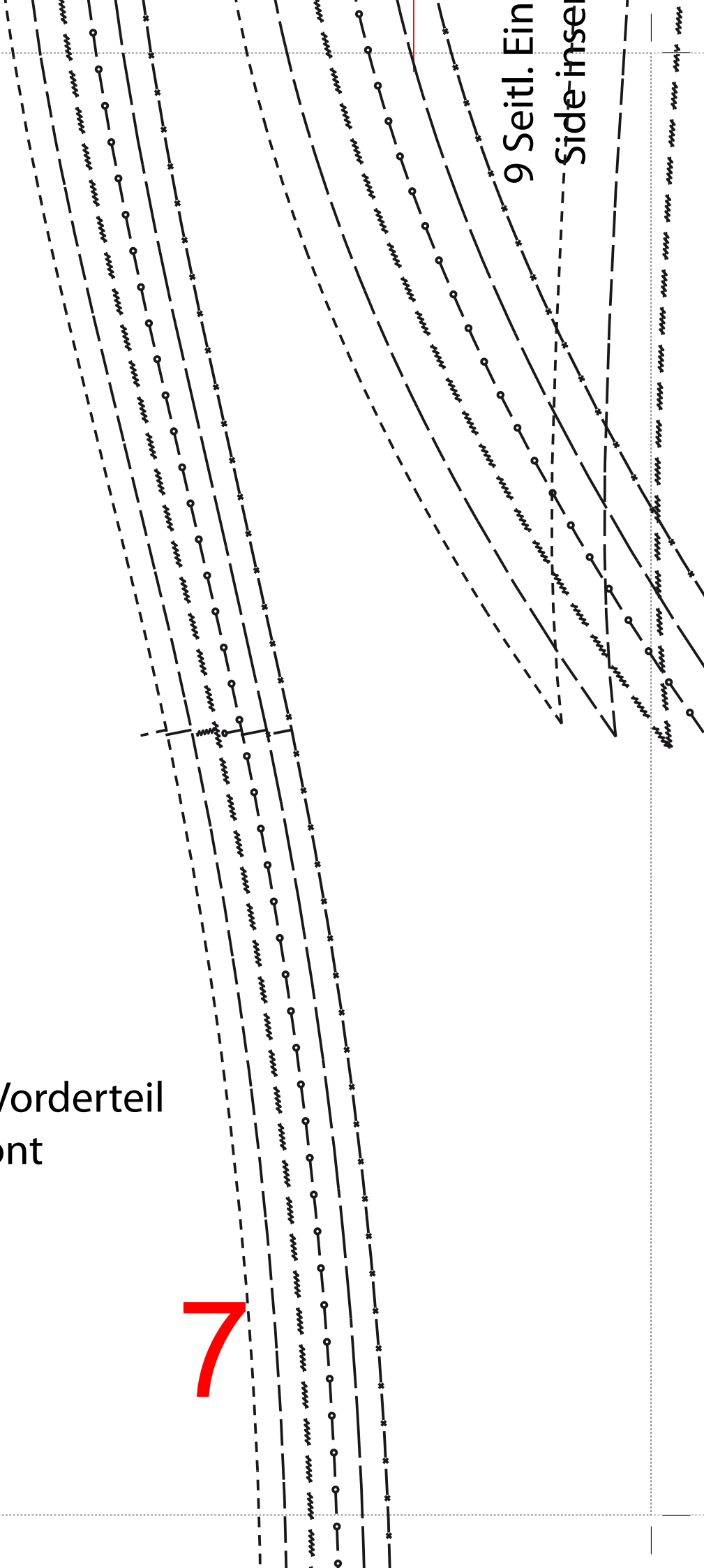
Hintere Mitte / Stoffbruch

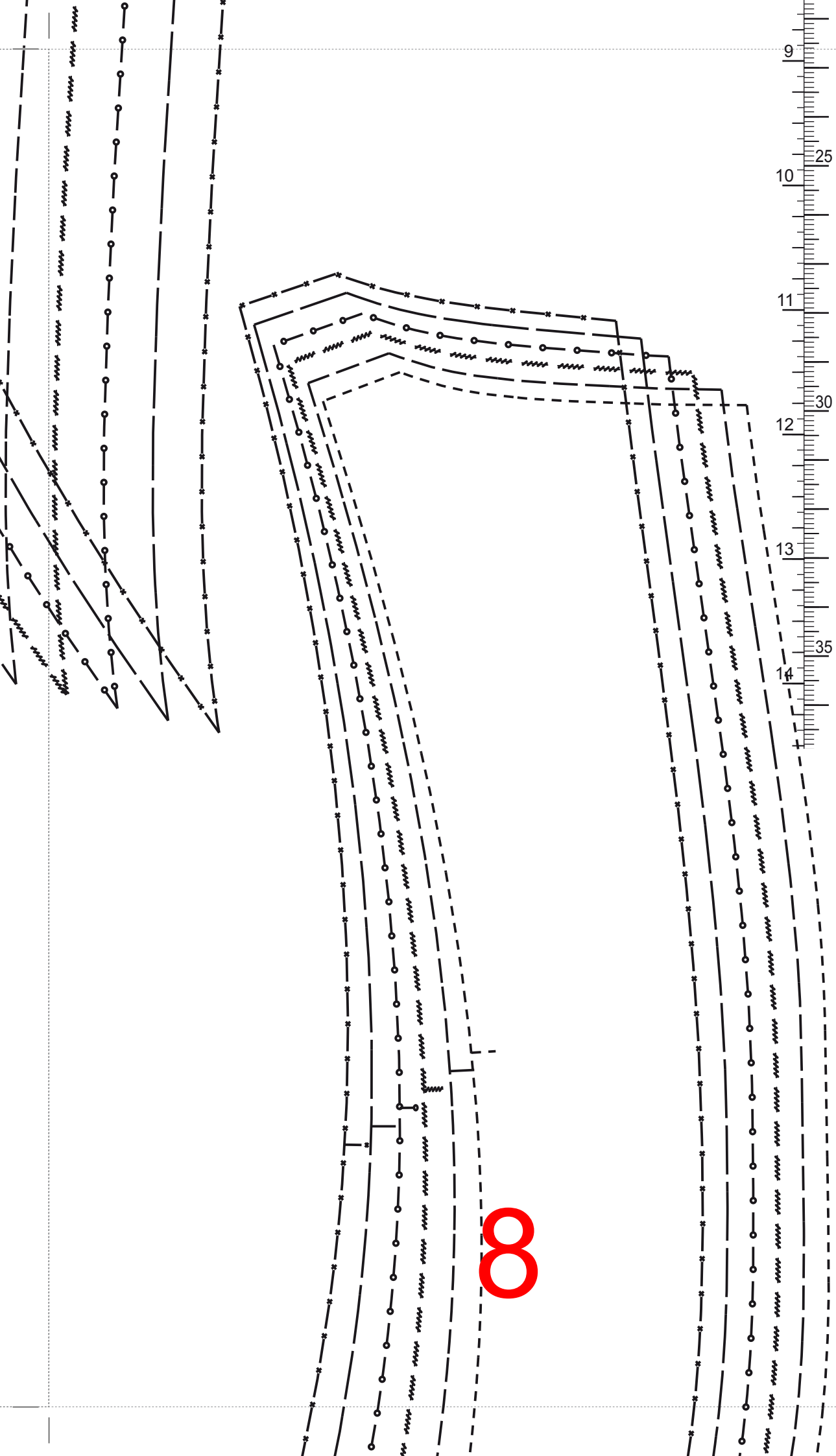
Center back / Fabric fold

1 Mittleres Vorderteil
Centre front

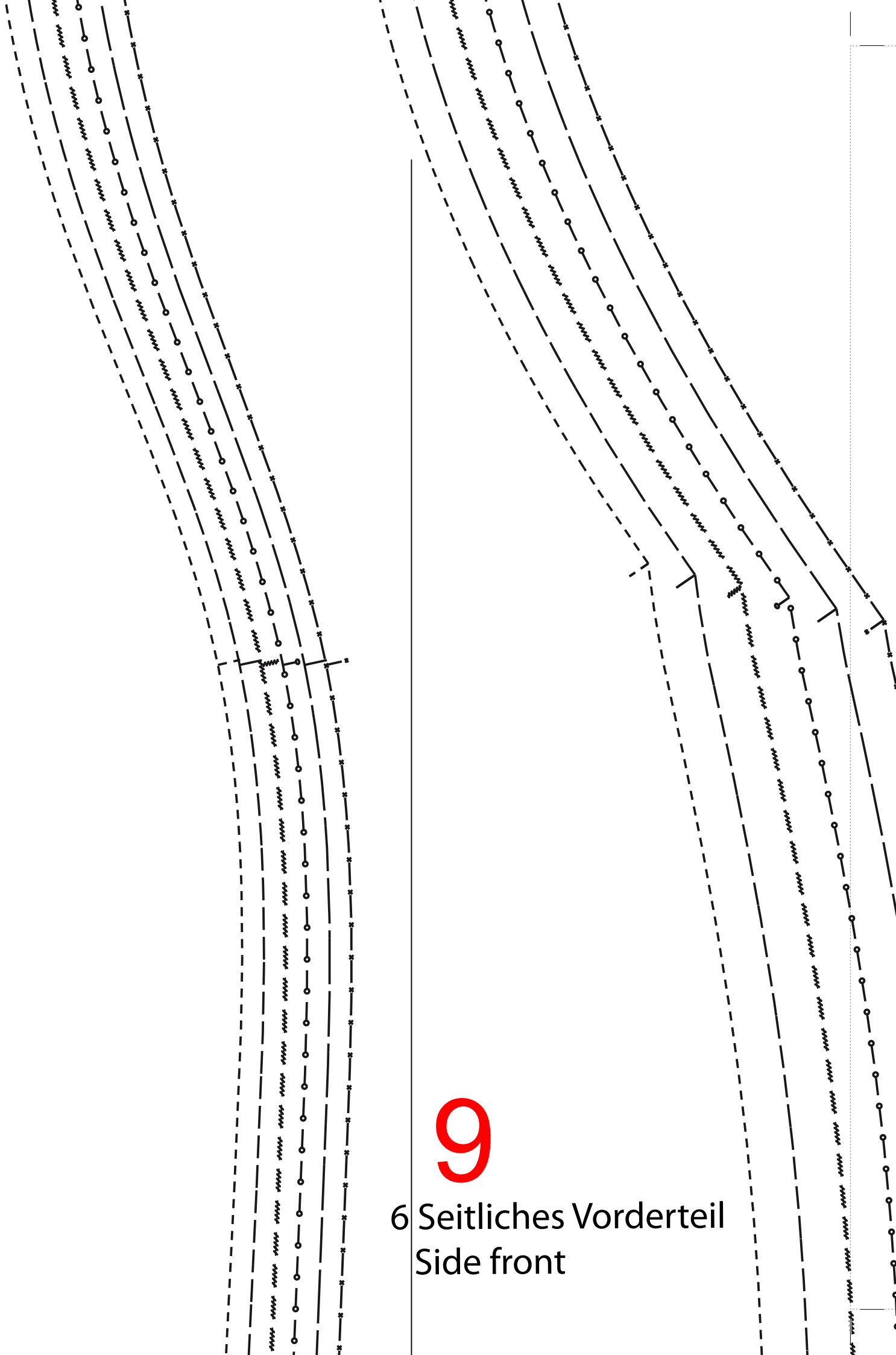
7

9 Seidl. Ein
Side-inse



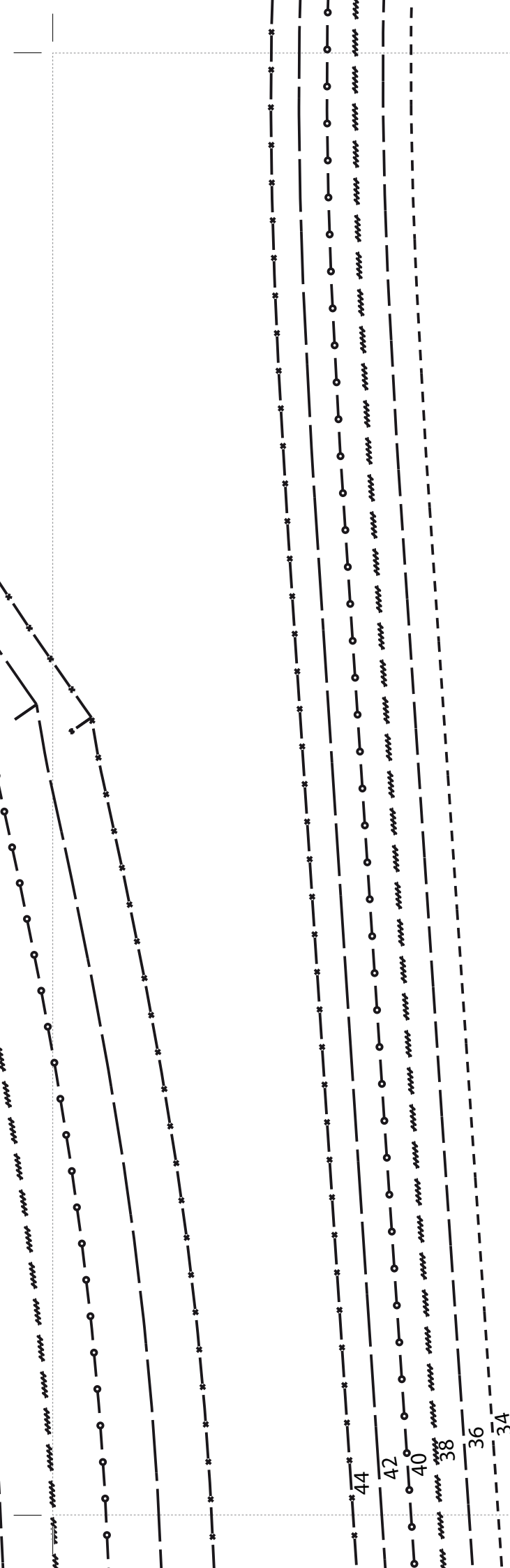


8



9

6 Seitliches Vorderteil
Side front

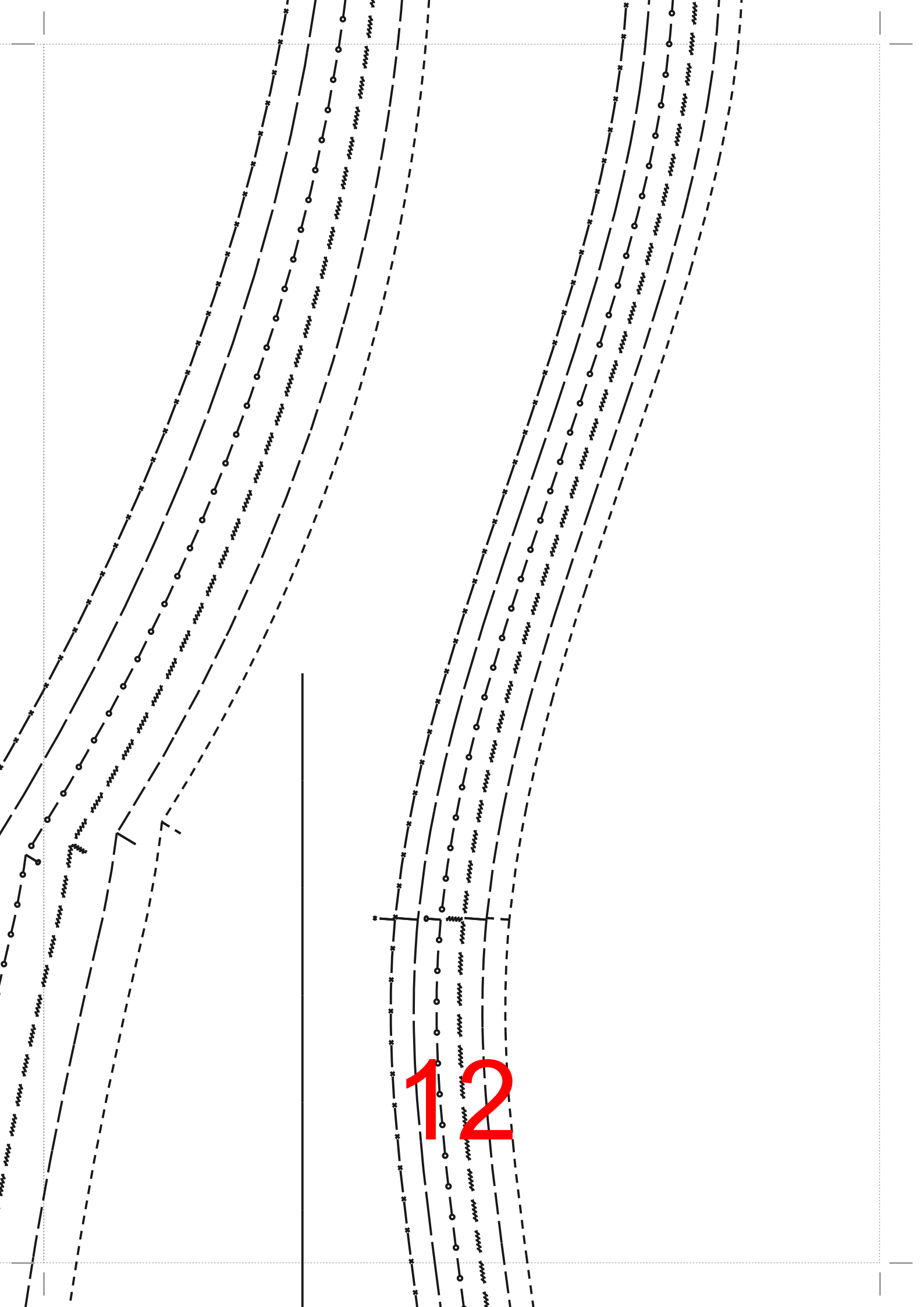


10

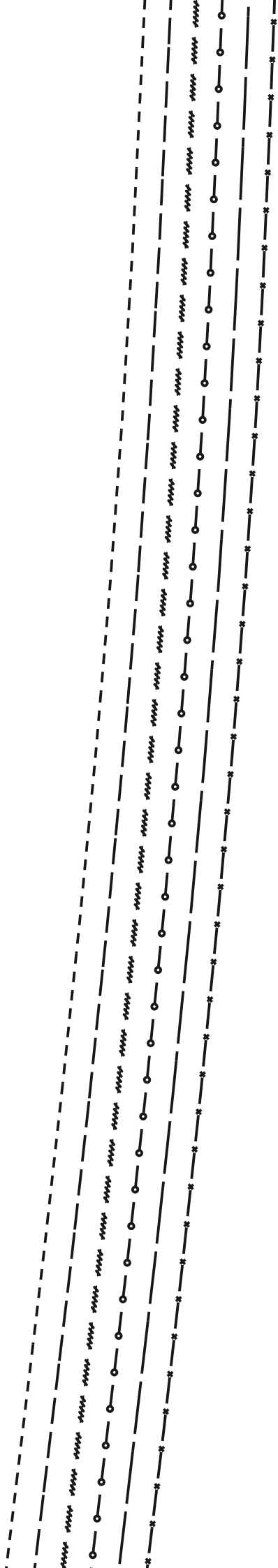
Vordere Mitte / Stoffbruch

Center front / Fabric fold

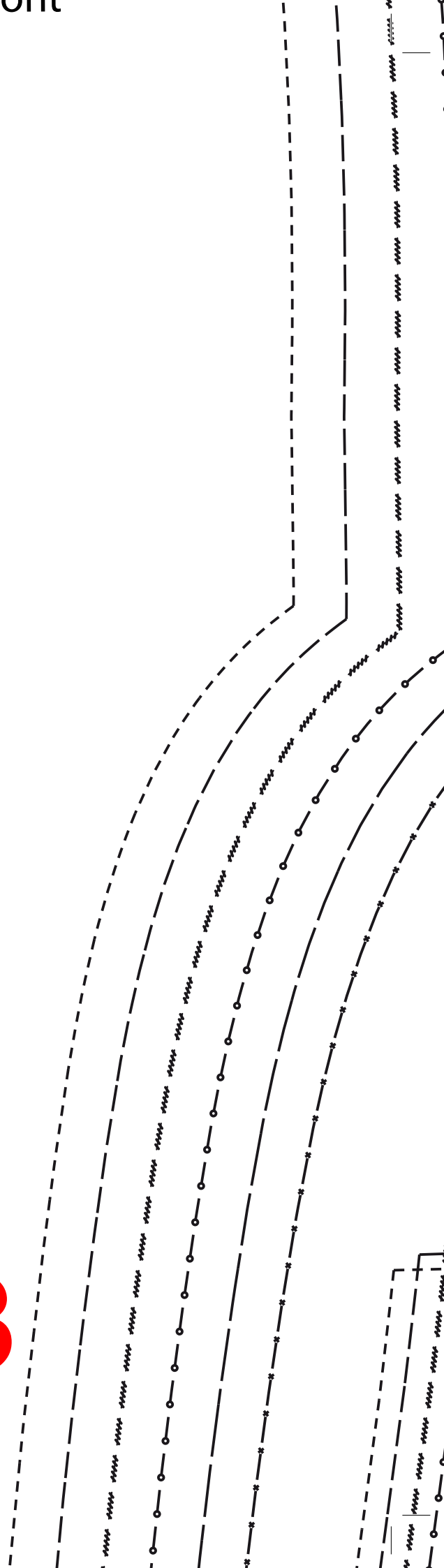


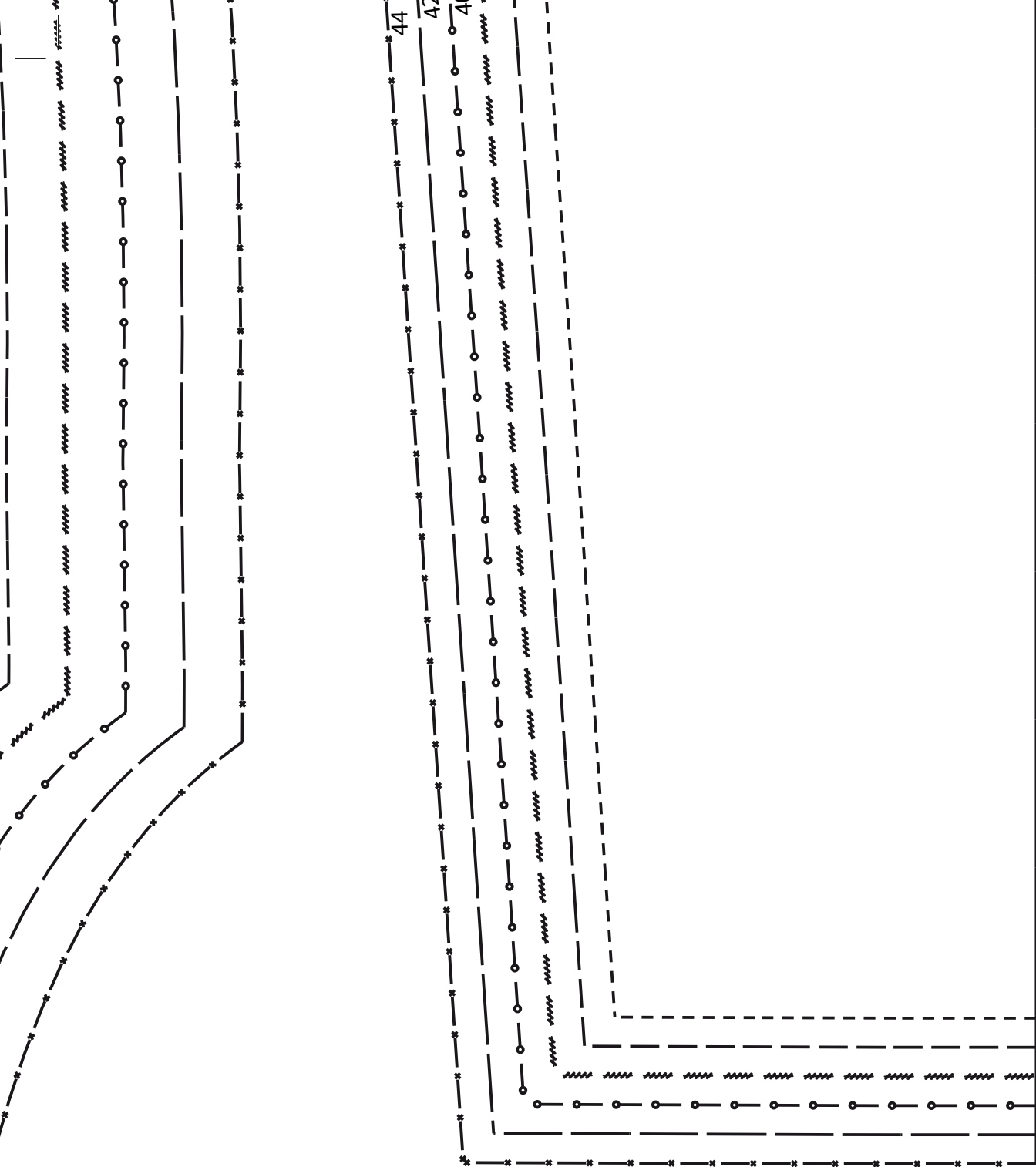


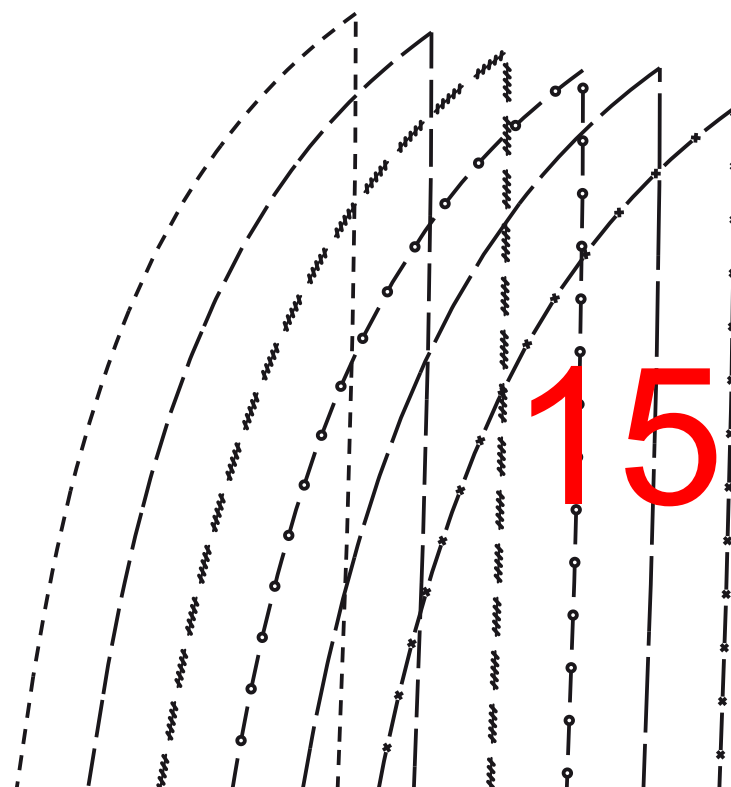
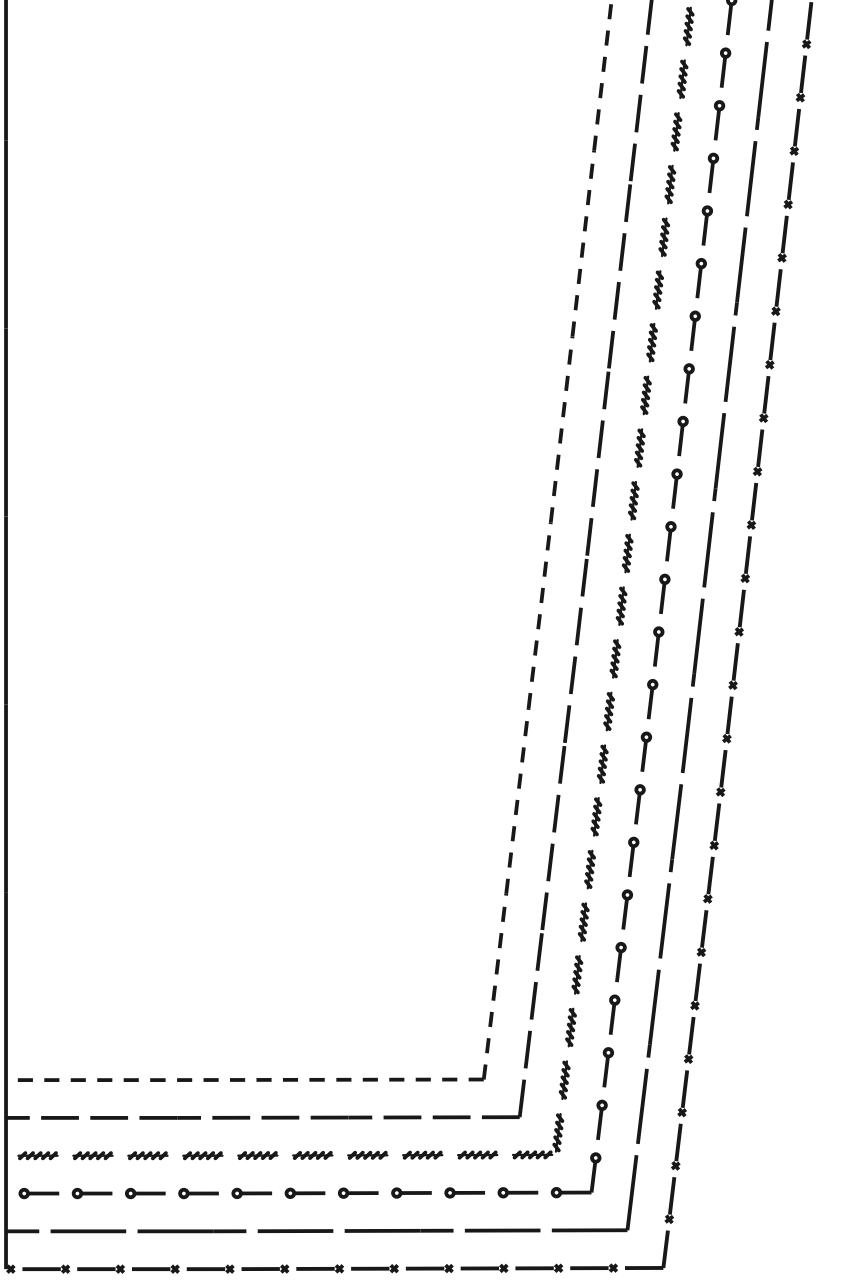
12



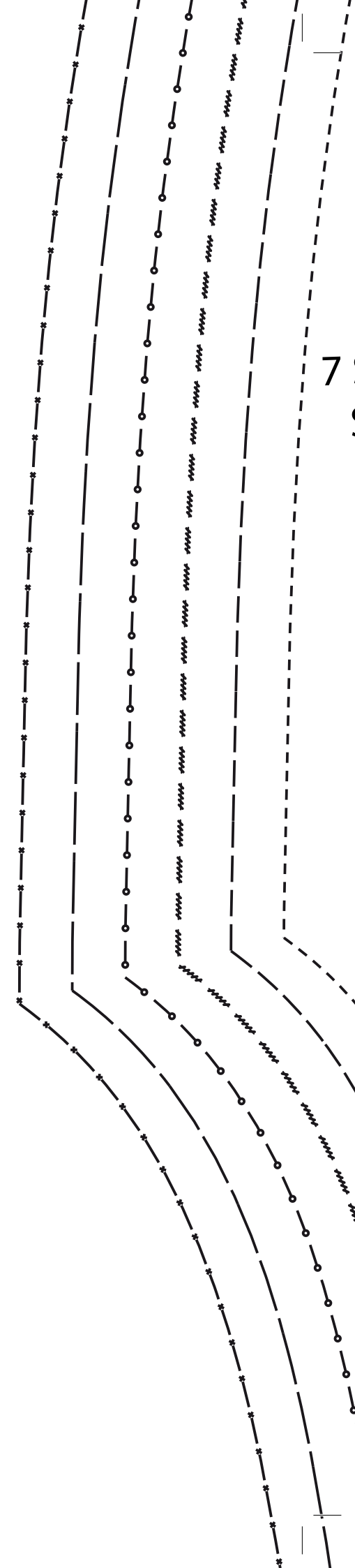
13







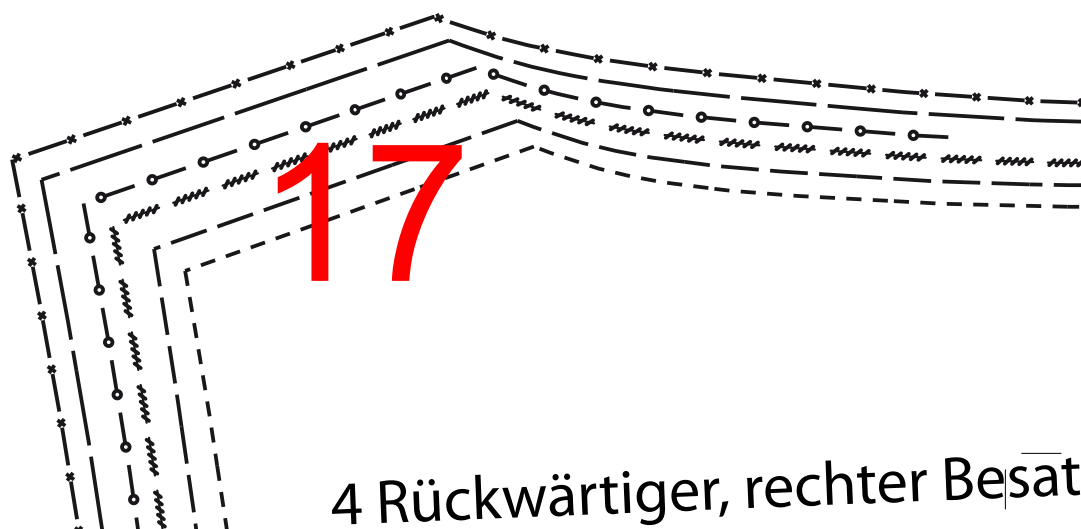
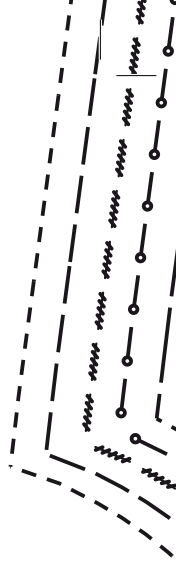
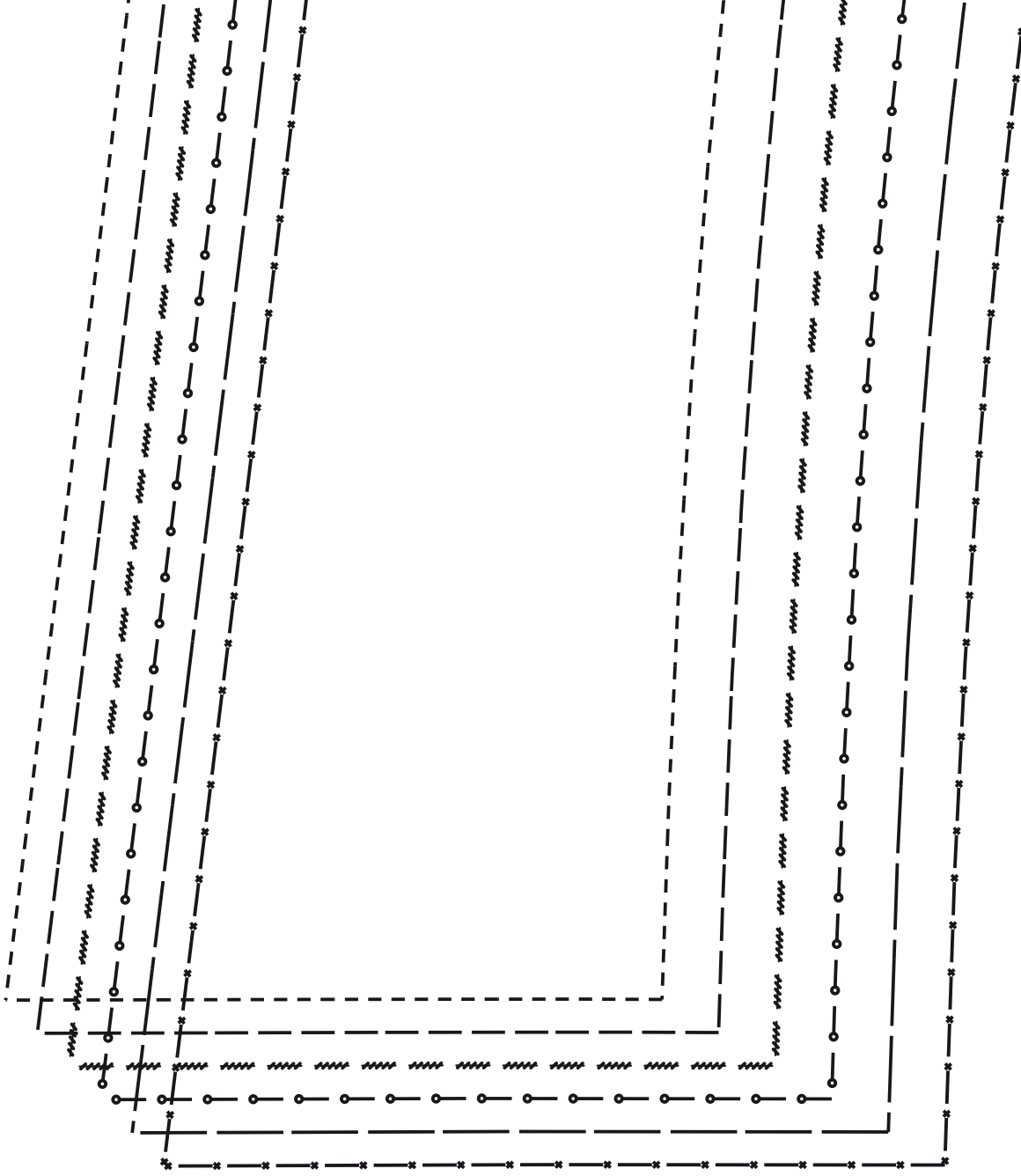
15



7

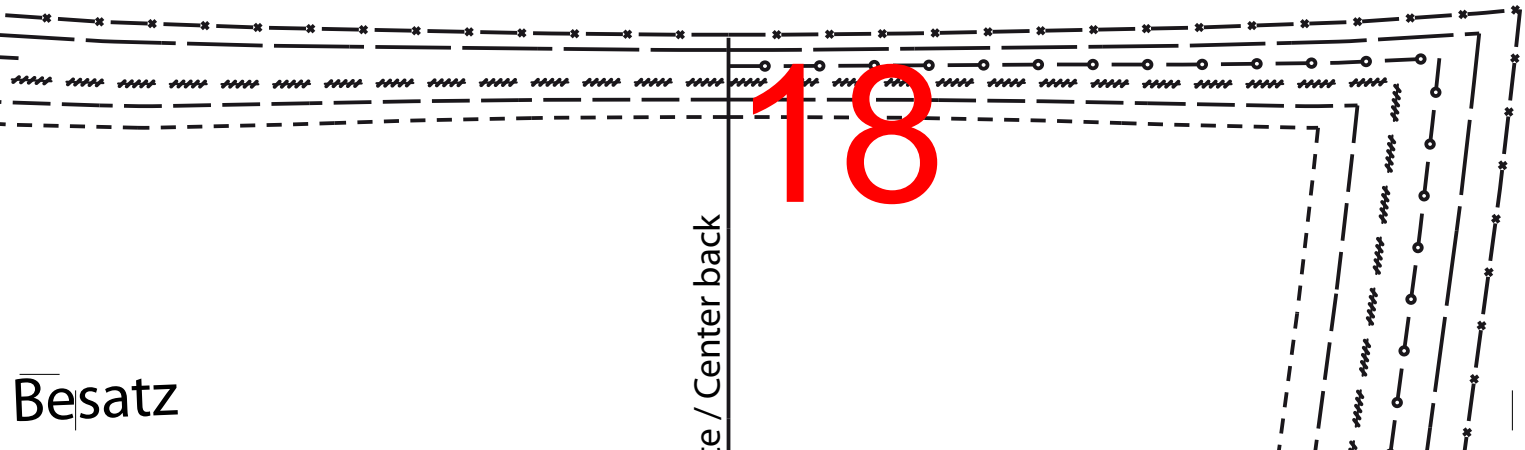
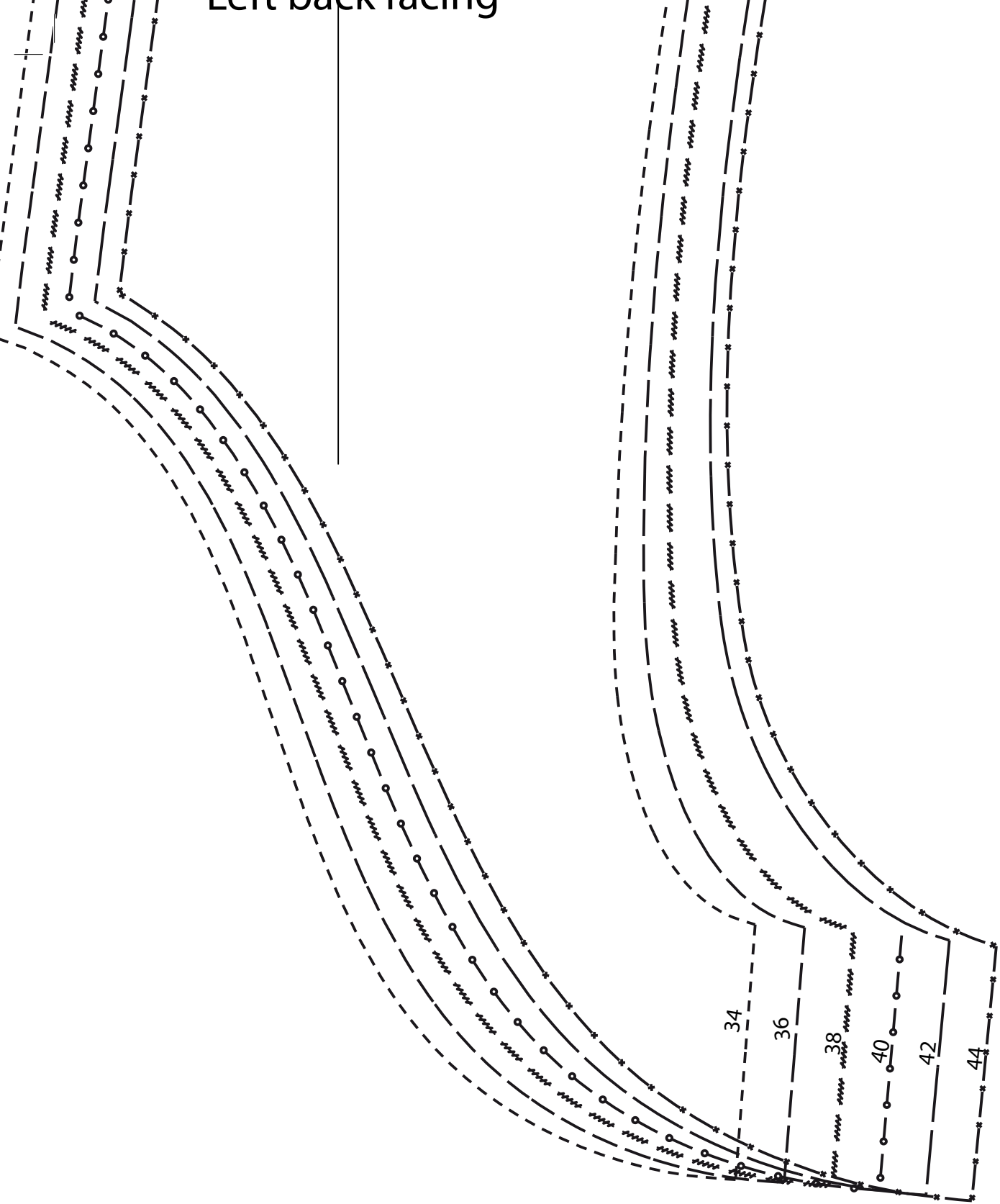
7 Seitliches Rückenteil
Side back

16



4 Rückwärtiger, rechter Besät

Left back facing



Center back

18

Besatz

34

36

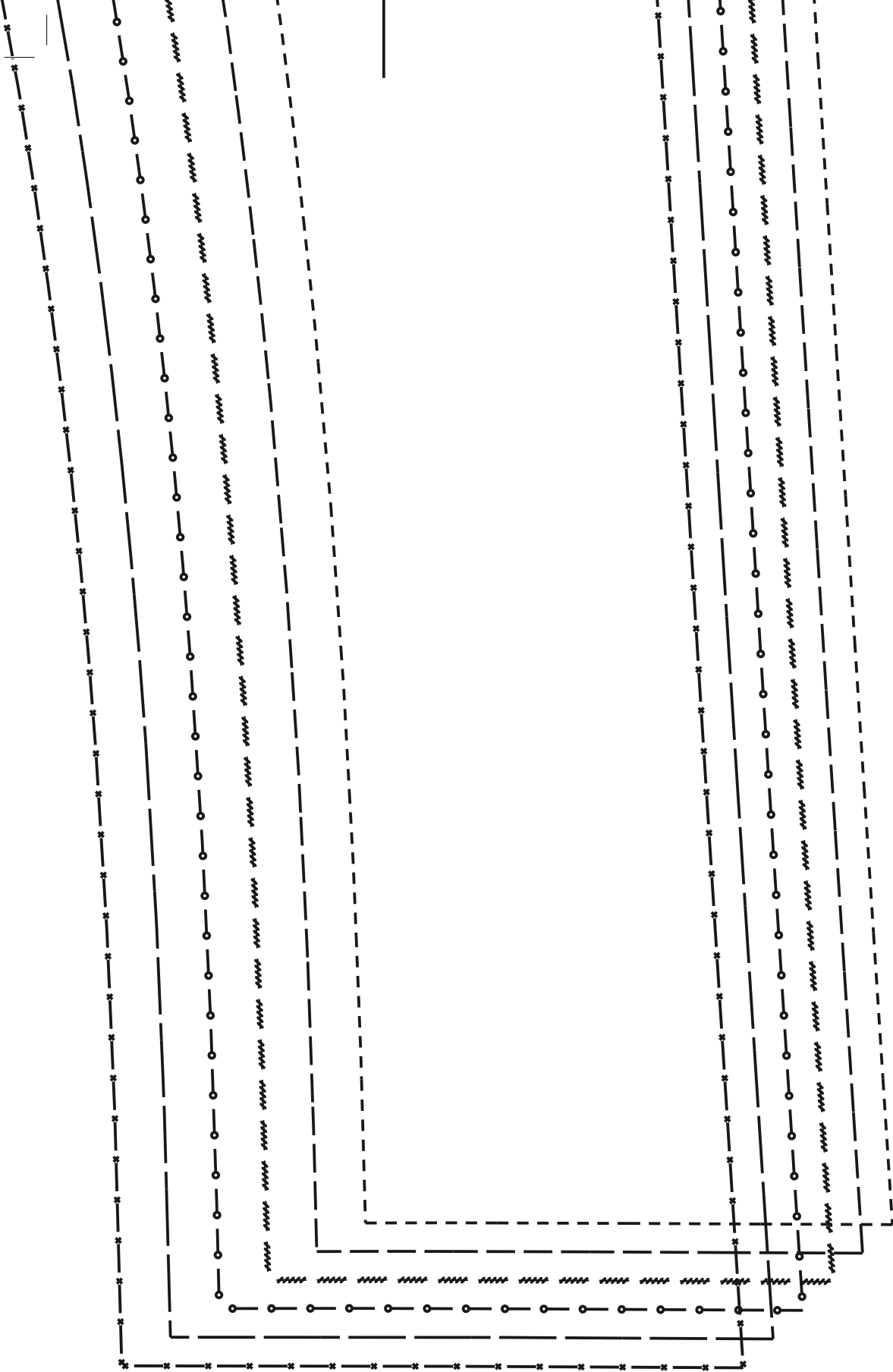
38

40

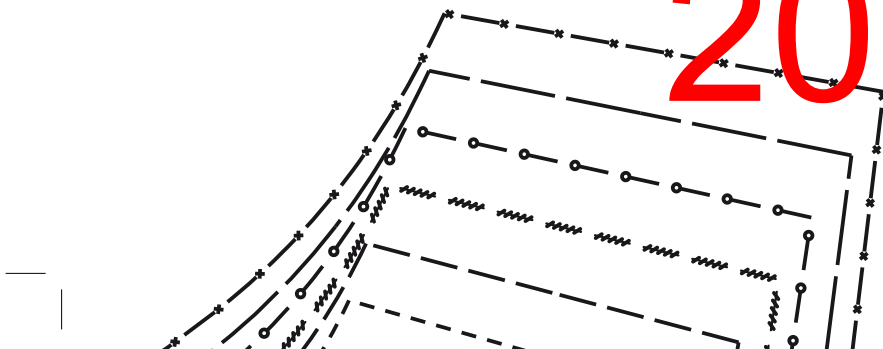
42

44

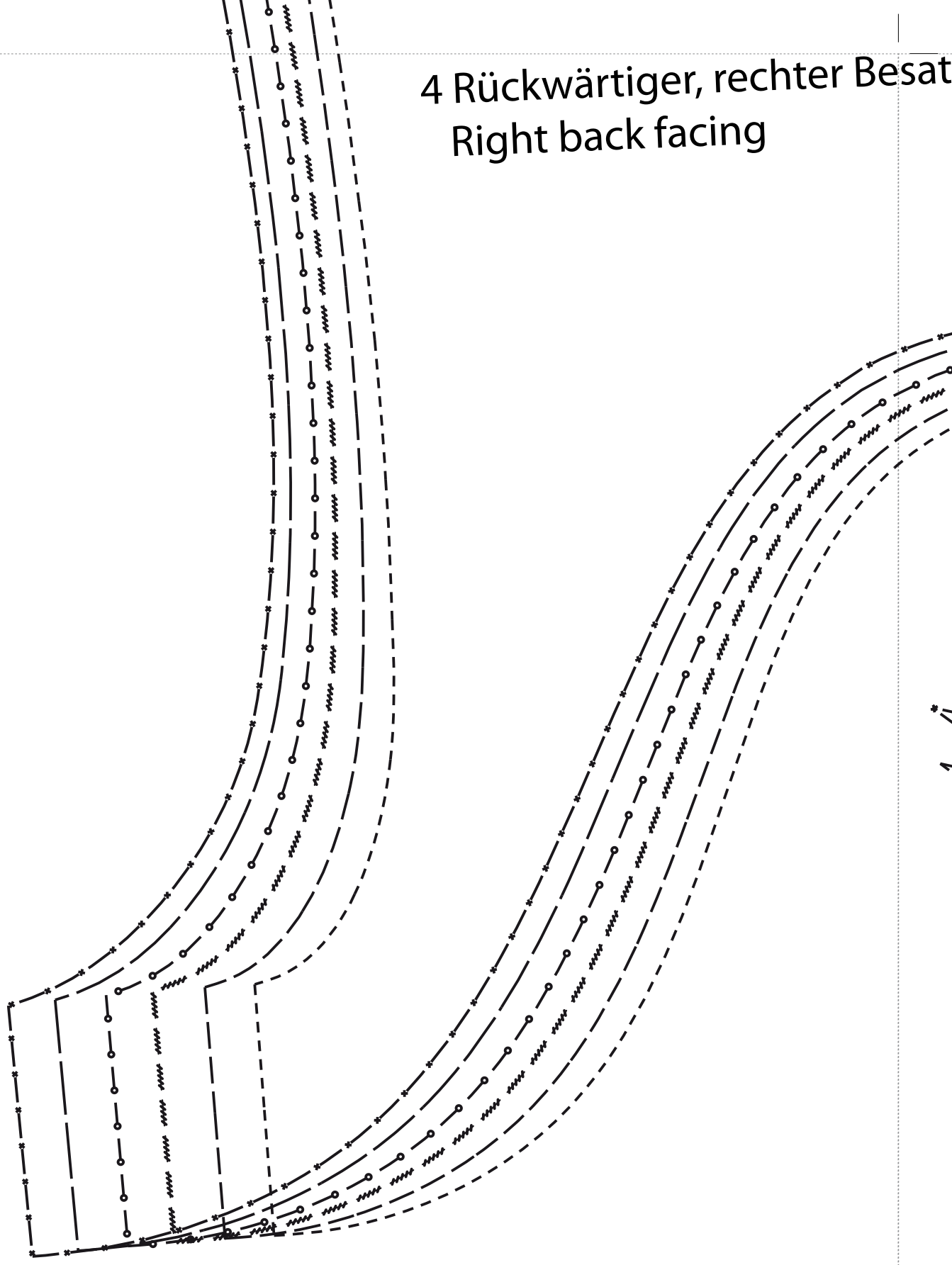
8 Seitl. Einsätze unten



20

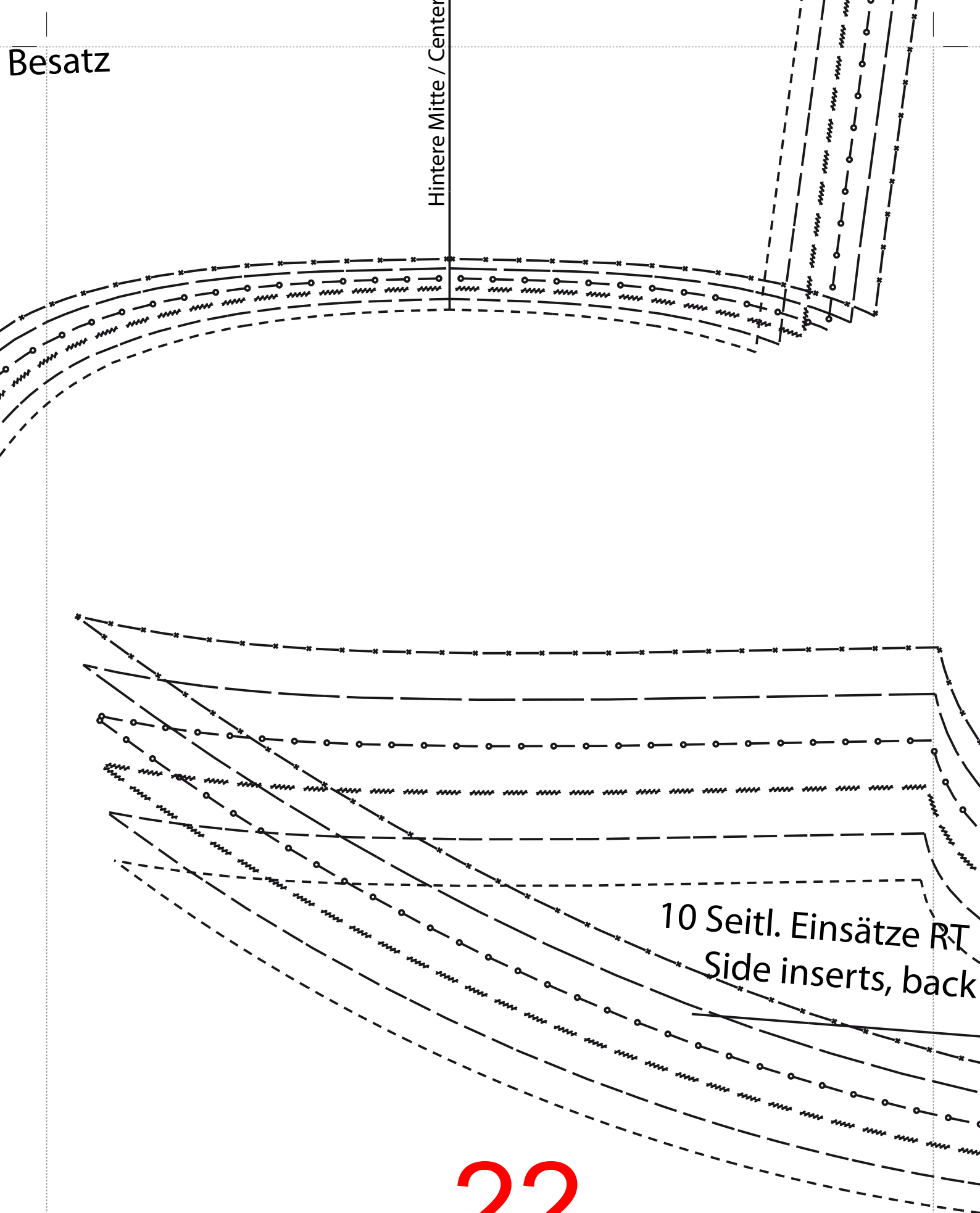


4 Rückwärtiger, rechter Besatz
Right back facing

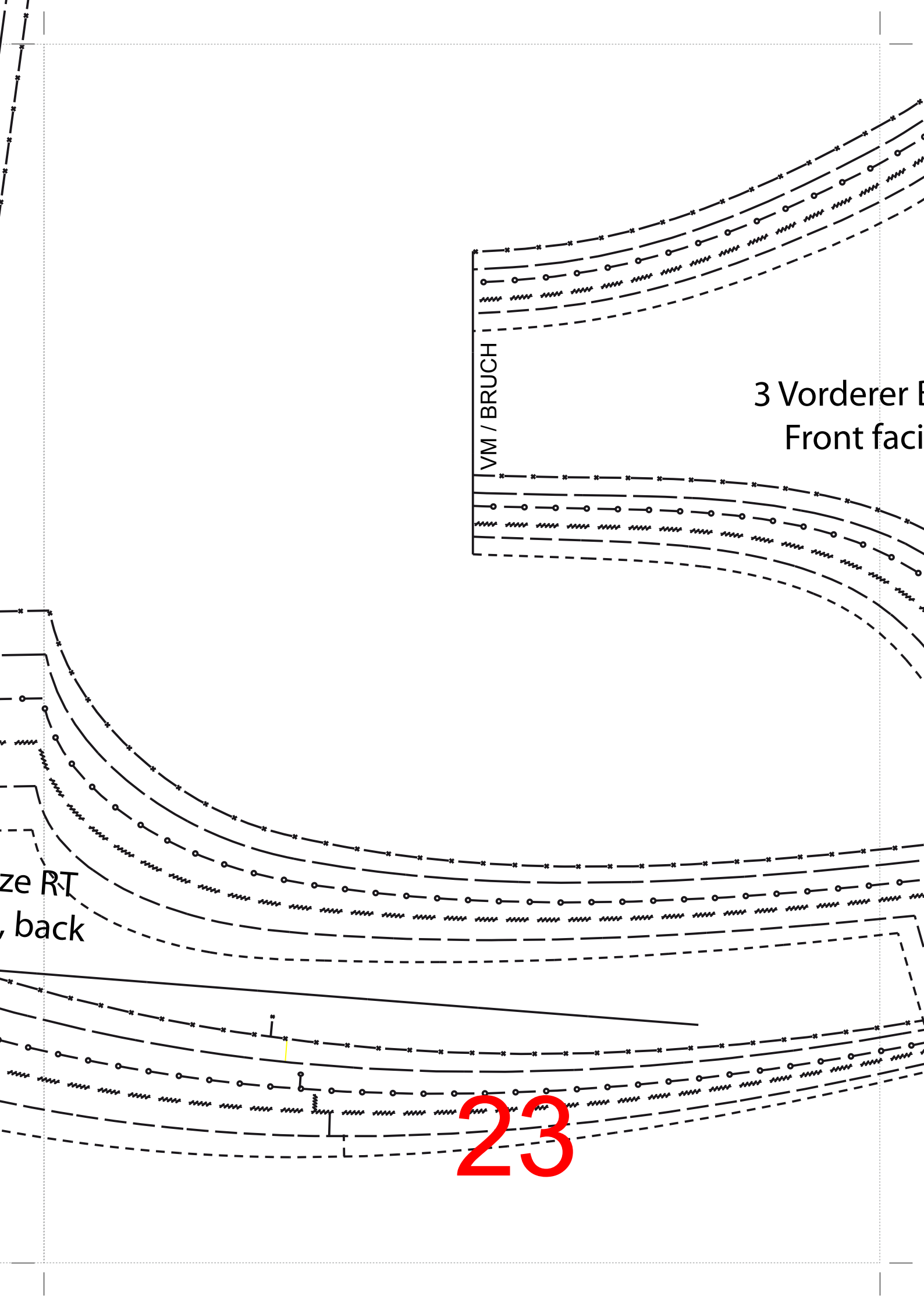


Besatz

Hintere Mitte / Center



10 Seitl. Einsätze RT
Side inserts, back



VM / BRUCH

3 Vorderer B
Front faci

ze RT
, back

23

derer Besitz
nt facint

