

Carry Sew Table and Hoop Bag

Created by Joy Harvey



Materials List

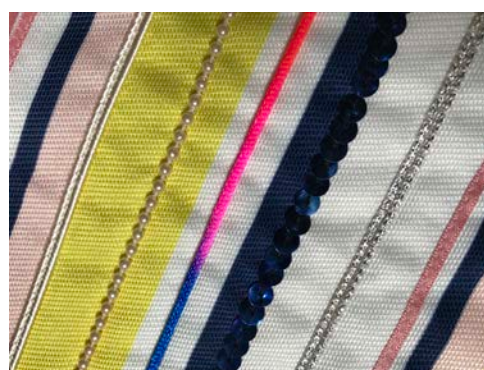
- 2 x 45cm x 59cm pieces of striped fabric
- 2 x 45cm x 59cm of fabric for bag lining
- 2 x 45cm x 59cm pieces of Bosal fusible wadding or similar
- 2 x 72cm x 9cm of fabric for straps
- 2 x 72 cm x 9cm pieces of wadding for straps
- 1 x 7cm x 19cm piece for closure strap
- 1 x Polyester thread to match
- A number of different, braids, cords the length of the bag. (59cm)
- Strings of sequins, and pearls, sizes appropriate for presser foot 12C
- Threads to match the decorative braids.
- 1 x 90cm of piping cord
- 1 x Snap closure
- Jeans Needle #80
- Presser foot # 12 or 12C

What to do with all those leftover cords, ribbon, braids, pearls and sequins? Your answer, foot #12C my favourite presser foot for attaching braids to fabric, so easy and so much fun. The Stitches becomes invisible with this method, you won't stop at just one or two rows.



Method:

Cut the selvages from the fabric and keep aside. Press the wadding to the wrong side of the front and back of the fabric. Lay onto the front and back, the order of decorative braids, ribbons, and sequins, pleasing to your eye and take note or a photo.



Machine Setting

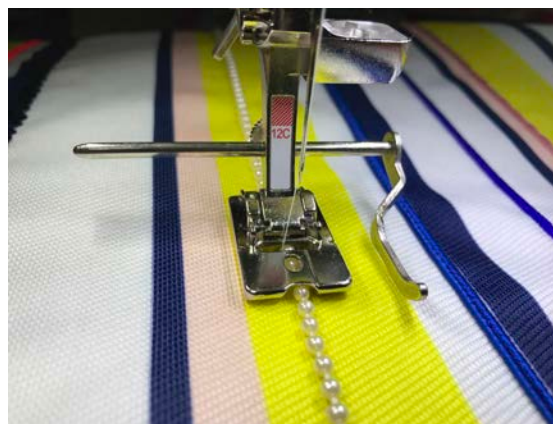
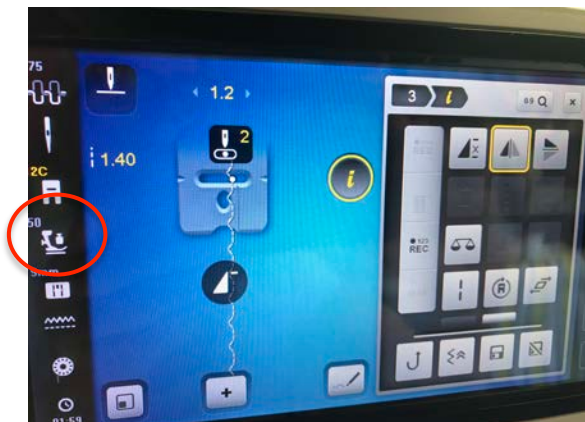
Presser foot 12/12C

- Stitch # 3 or # 9
- Stitch Length 1.40
- Stitch Width 1.2
- (adjust if required)
- Thread to match cord colour
- Jeans Needle 80
- Mirror image if required
- Move the needle position as required

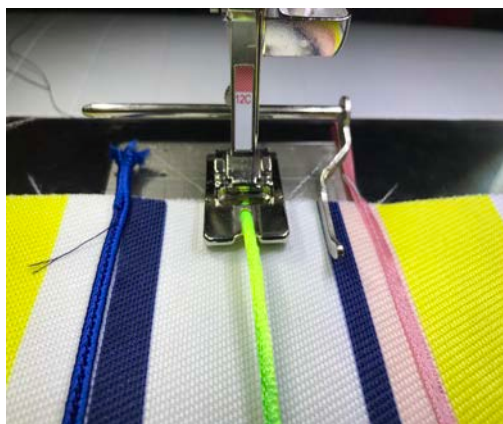


Note: Reducing the pressure off the presser foot is sometime helpful.

Attaching Pearls with Foot 12C



Before placing the presser foot onto the machine, attach the seam guide to the back of the presser foot and tighten the screw. Feed the cord down through the hole, under the foot and through to the back, making sure that the cord pulls through the hole smoothly.



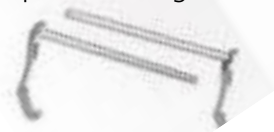
Machine Settings

- Select Stitch #2
- Stitch Width 2.75 (depending on the pearl size, adjust as required)
- Stitch Length 2.75
- Adjust presser foot pressure if required
- Thread to match pearl colour.



Attach the foot to the machine. Position the foot and adjust the seam guide the distance required from the edge of one of the stripes (not necessarily in the centre), stitch the length of the stripe. Gently hold the braid so that it does not twist or roll. Complete all the rows that are required for the cord.

Note: The seam guide is standard with each machine. Loosen the little screw at the back of the foot and insert the guide, adjust the guide to the distance required and tighten the screw.



Magic! No Stitches Appear!

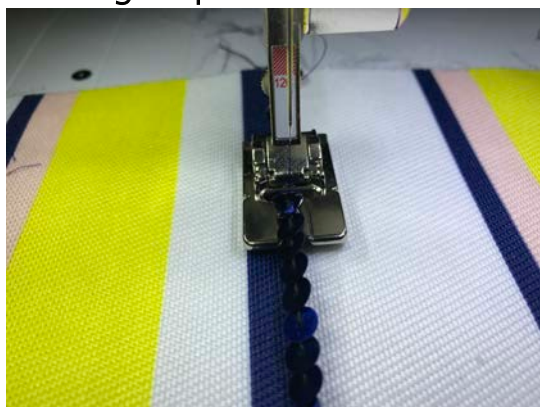


Method:

Place the pearls under the foot if they are too tight to feed through the hole at the front of the foot. Stitch slowly at half speed down the length of the stripe. Complete all lines of pearls.

Note: The Zigzag of the stitch will fall over the pearls and you won't notice the stitch.

Attaching Sequins



Important: Thread the sequins through the hole at the front of the foot, so that the sequins lay flat as they feed along while stitching. (Direction of sequins is important) The type of sequins, should be a soft pliable sequins.

Trial the sequins through the hole at the front of the foot. If they are too large for the hole, place the sequins under the presser foot.

Machine setting for attaching Sequins

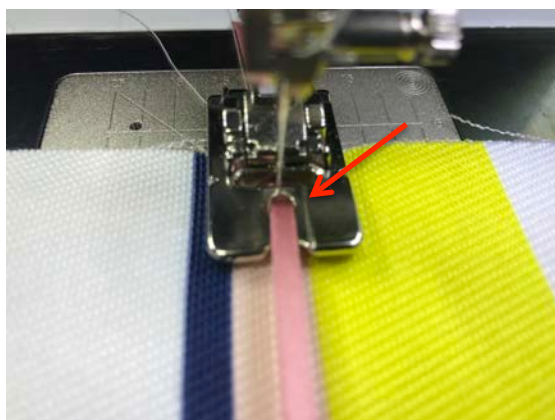
- Select Stitch
- Straight Stitch
- Needle position Centre
- Presser 12/12C
- Stitch length 3.00 (Test and Adjust stitch length according to the sequins)
- Adjust presser foot pressure (if required)
- Jeans Needle #80
- Thread to match Sequin colour
- Complete all rows



Attaching Narrow Ribbon:

Foot 12C makes this job very simple.

There is no need to glue or tack down, just sew along the line using the groove along the top of the foot as a guide.



Machine Settings

- Straight stitch
- Stitch Length 2.75
- Needle position centre
- Thread to Match Ribbon

Method:

Feed the ribbon through the hole in the front of the foot then under the foot. Stitch along the centre of the ribbon using the groove along the top of foot as a guide.

Complete all rows.

Attaching Russia Braid

Same settings as above.

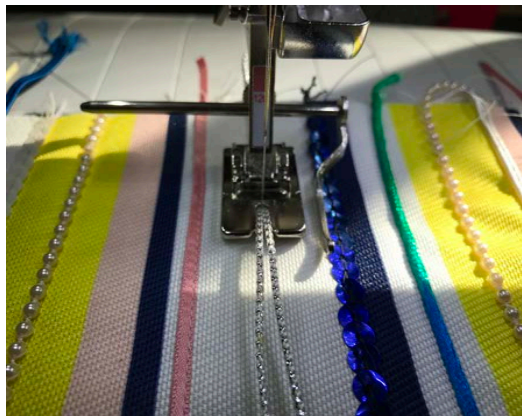
This braid is very pliable and very useful when creating shapes. Gently hold the braid flat to stop the twisting while sewing

Complete rows as required



Attaching Double Cord

Place two strings of medium cord together the length of the bag.



Machine Settings

- Select stitch that best suits the cord.
- Needle position centre
- Stitch length 1.30
- Stitch width 4.90
- Thread to match
- Adjust the stitch length and width so that the needle only picks up a little of the cord on either side.
- Complete all rows



Complete all the decoration on both the front and the back panels of the bag. Trim away all excess thread, cord or ribbons.

Note: Ease out any bead or sequins that lay in the seam allowance that could cause trouble down the track.

Attaching the Piping and the Selvage

It is possible to stitch in place the piping and the selvage in one go. However, I prefer to do this in two separate runs.

Attaching Piping Cord

Attaching the pre purchased piping cord



Machine Setting

- Presser foot #12
- Jeans needle # 80
- Polyester thread
- Stitch Length 2.5
- Needle position - one position to the right

Method:

Attaching Piping

Apply the pipping with the right sides together and at the top edges of the front and back of the bag, matching all the raw edges..

Bring all layers of the fabric under the presser foot.

Place the channel of the foot over the piping and straight stitch in place.

Attaching Selvage

Place the Selvage right side down, over the top of the piping. Move the needle position back to the centre and with all the raw edges matching, straight stich along the width.

Press .

Note: Before the lining is attached to the bag, the bag closures and handles need to be in place.

Closures for the Bag



The Bag Closure

Purchase a Snap Closure.

Centre the closure at the front of the bag.

Apply two small buttonholes at the point where the arms slip through the fabric. Split the buttonholes and pushed the arms of the disc through all the layers of the fabric. Bend the arms outwards at the back of the fabric.



Strap Closure

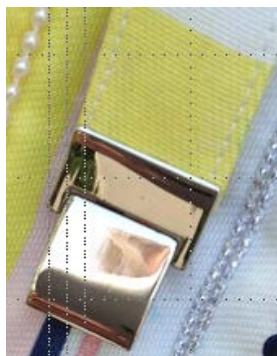
The width of the strap will depend on the width of the closure end.

Press the wadding onto one side of the strap. (if required)

Fold the strap in half lengthwise and straight stitch along the raw edge using a 5mm seam allowance. Trim back the excess wadding and fabric.

Press and top stitch

Closures Strap With a close zigzag, stitch across one end. Place the closure over the zigzag end. Gently squeeze the ends together.



Handles

Machine Setting

- Presser foot 1/1D
- Straight stitch
- Needle Jeans Needle
- Stitch length 2.75

Method:

Place the wadding onto one side of the handles and press.

Fold the strap in half lengthwise and straight stitch along the raw edge using a 5mm seam allowance.

Trim back the excess wadding and fabric.

Turn through to the right side.

Press and top stitch.



Handle Placement

Measure and mark from the side seams, an even distance for the handles to sit.

Place the handles against the right side of the fabric behind all the piping and selvage (the handles are last in line). Check the handles are not twisted.

Stitch the handles in place across the seam allowance.

Push the handles down to the wrong side of the bag and pin them out of the way

Bag lining

Overlock the lower edges of the bag lining.

Stitch the top of the bag lining (front and back) to the front and back fabric panels. with right side together.

Fold the lining over the top of the fabric panels.

Trim the seam allowance so that it doesn't become bulky.



With the right side together, pin the bag side seams together, both front and back. Pin lining side seams together front and back forming a long tube. In one operation, stitch down the side seams along the fabric bag and down onto the lining, leaving **large opening** at the lower end of the lining.

Overlock the raw edges. Trim off excess thread and seam allowances. Clip where necessary. Through the opening in the lining, pull the bag to the right side.



Attach the closure strap to the outside of the back of the bag, between the handles.

The Dual feed is very useful for this



Tips:

- When sewing with braid and other decorative thread, it is sometime better to adjust the foot pressure a little to allow the braid to travel under the foot smoothly.
- Adjusting the stitch length and width of a stitch sometimes give you a better visual impact.
- Always do a test run before you start on your project as every machine is slightly different.
- Be careful where you place the bulky cords, like pearl etc, as they may interfere with seams and closures.

Finished Bag

