

Vordere Mitte Stoffbruch Fadenlauf / Centre front on fold

**Für Körpergröße/ for height/ pour la taille 168 cm:**

<b>Grösse/ Size/ Taille</b>	<b>34</b>	<b>36</b>	<b>38</b>	<b>40</b>	<b>42</b>	<b>44</b>	<b>46</b>	<b>48</b>
Oberweite/ Bust/Poitrine	80	84	88	92	96	100	104	110
Taillenweite/ Waist/ Taille	64	67	71	75	79	83	87	94
Hüftweite/ Hip/ Hanche	90	93	96	99	102	105	108	113
Vord. Taillengl./ Front waist length/ Longueur taille devant	42	43	44	45	46	47	48	49
Rückw. Taillengl./ Back waist length/	41	41	41	42	42	42	42	43

**Legende/Legend/ Légend**

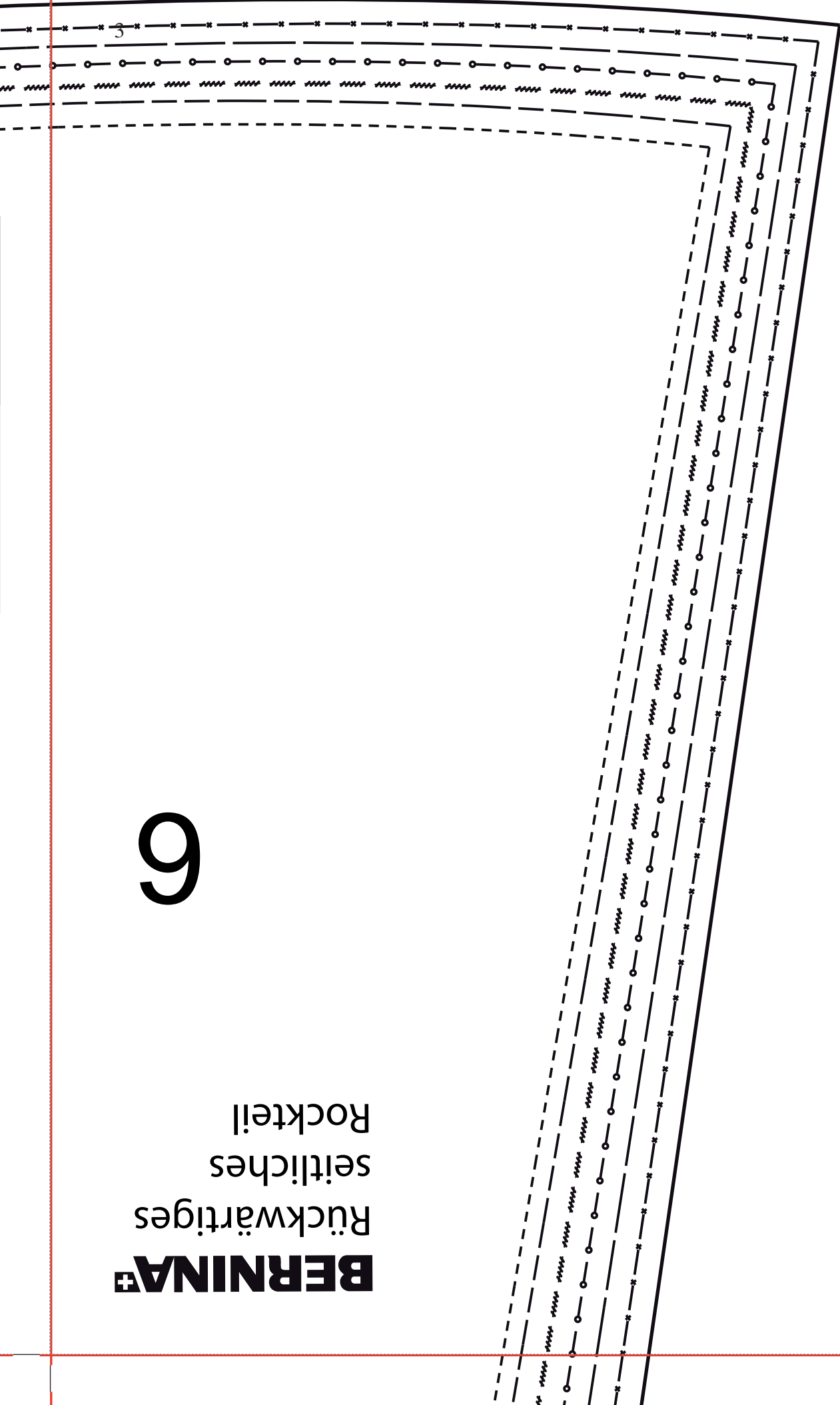
Grösse/ Size/ Taille	-----	<b>34</b>
	—————	<b>36</b>
	~~~~~	<b>38</b>
	—○—○—○—○—	<b>40</b>
	—————	<b>42</b>
	— * — * — *	<b>44</b>
	—————	<b>46</b>
	———	<b>48</b>

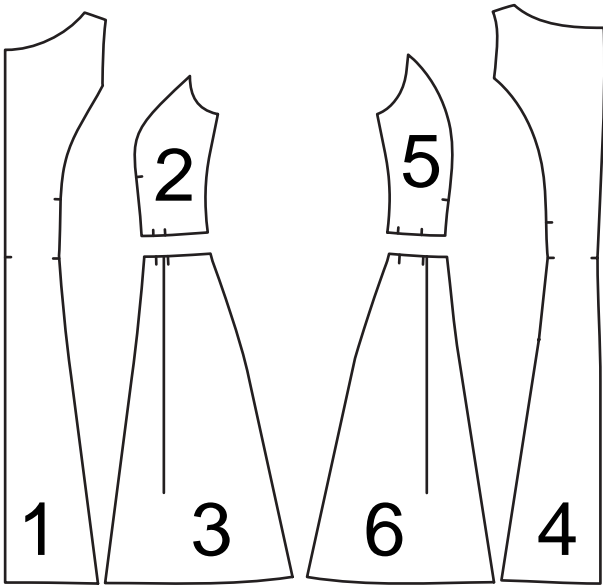
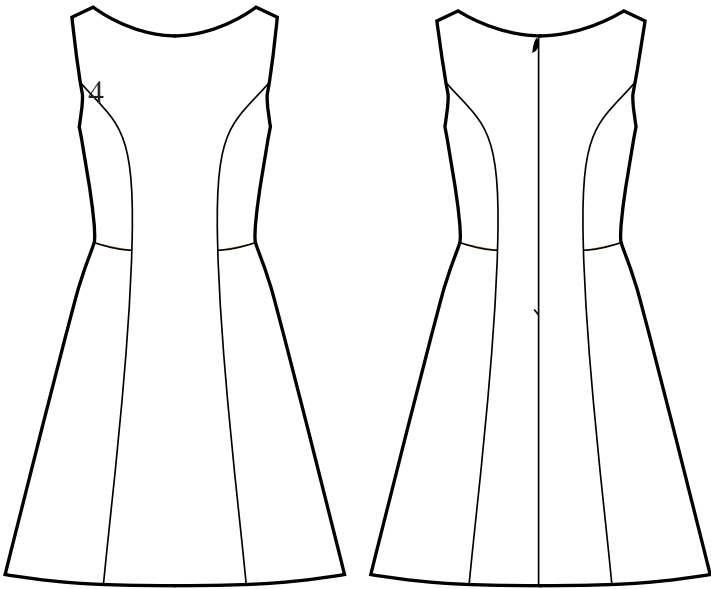


**BERNINA<sup>+</sup>**

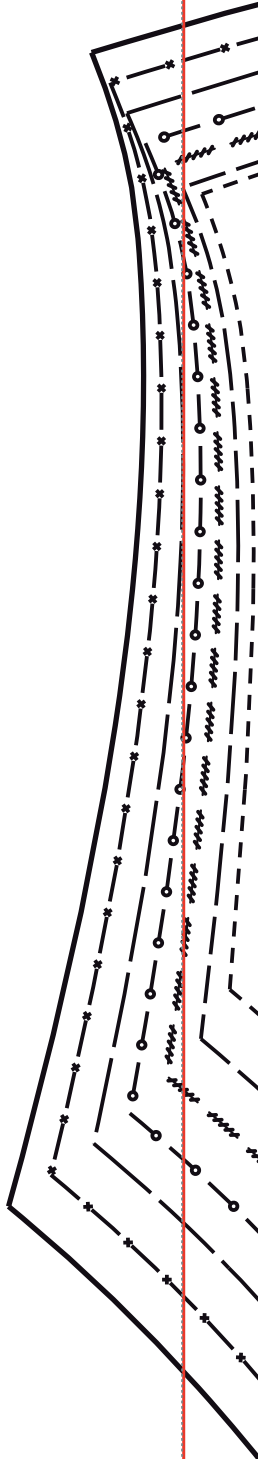
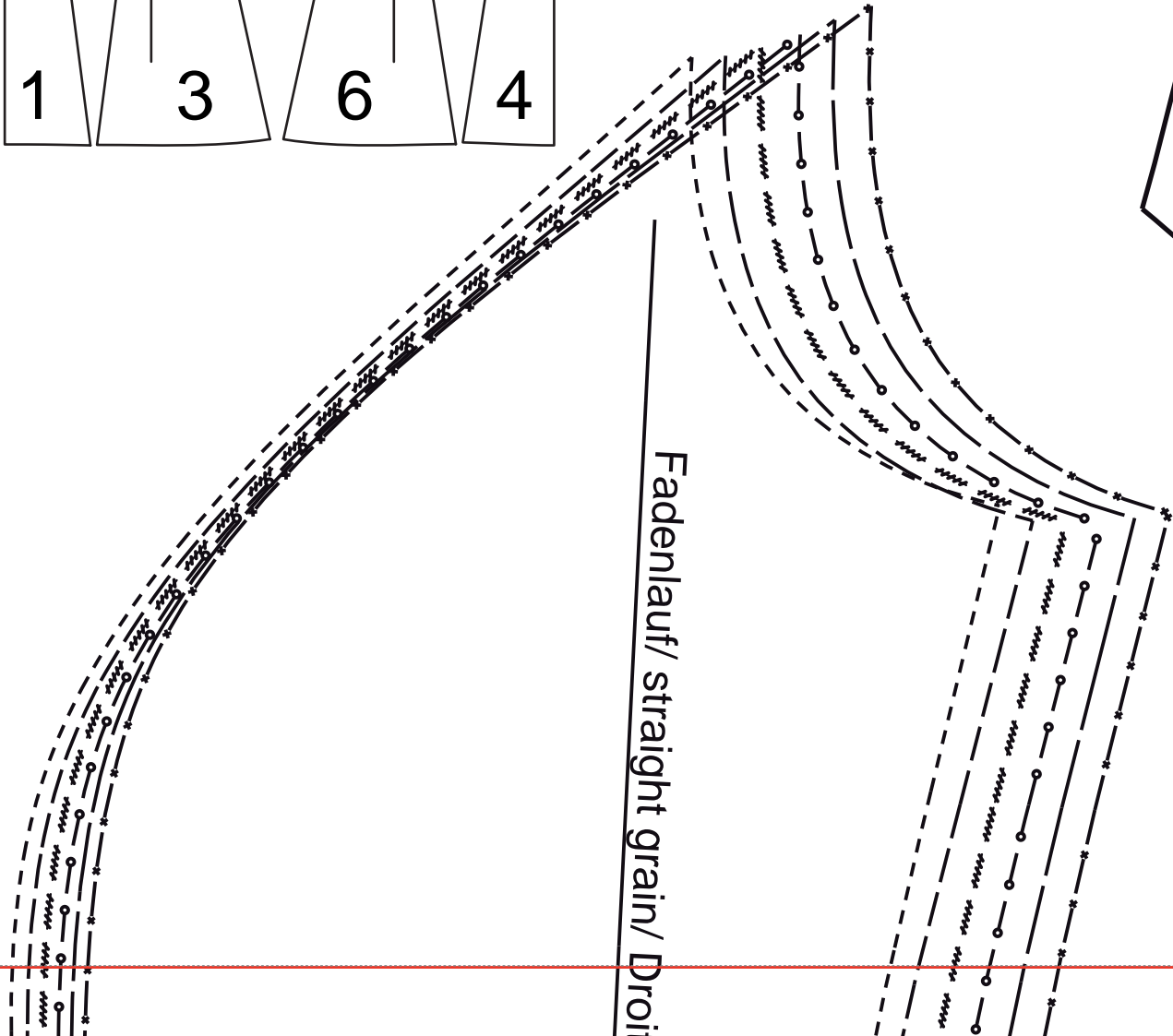
Rückwärtiges  
seitliches  
Rockteil

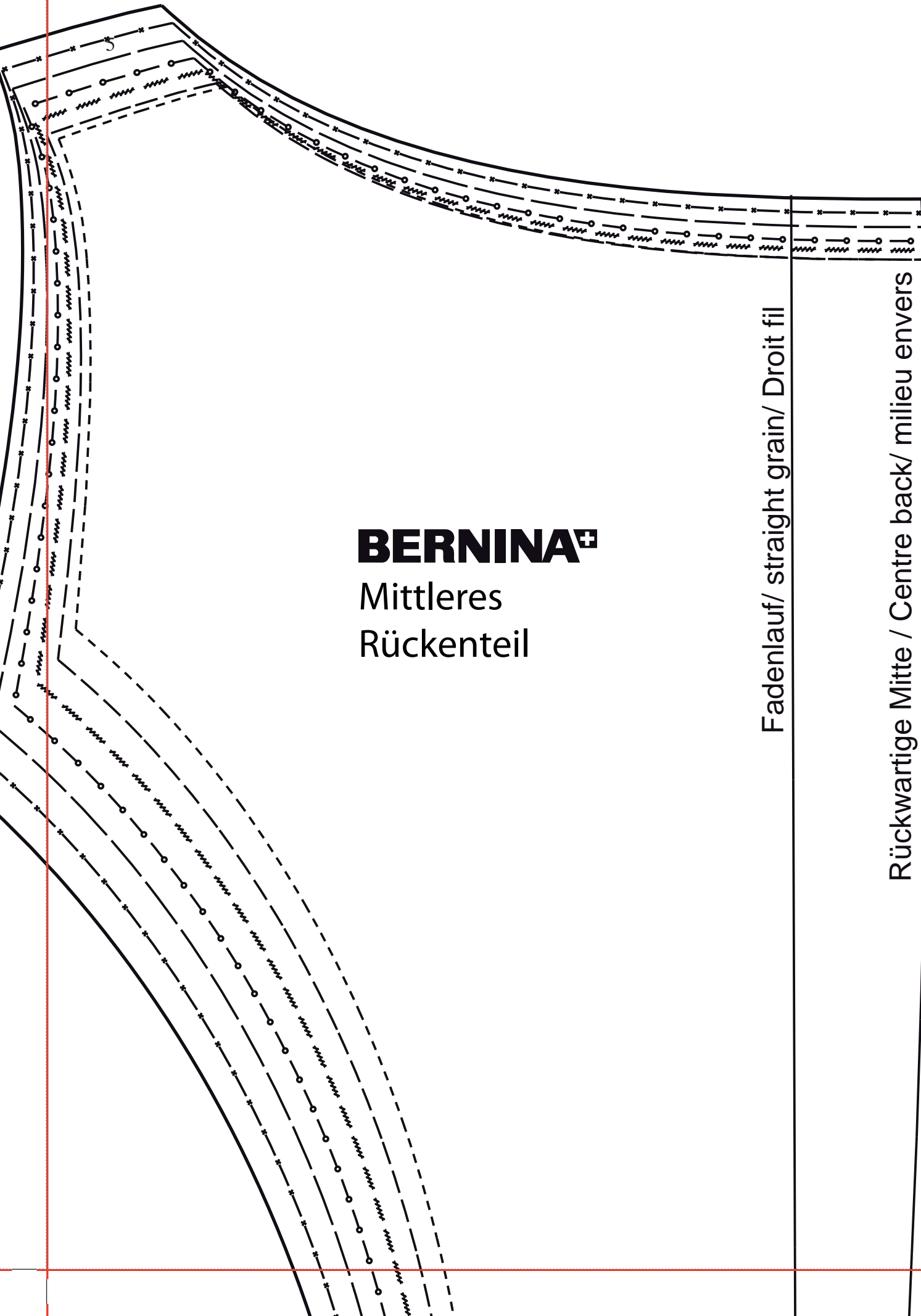
6





Fadenlauf/ straight grain/ Droits



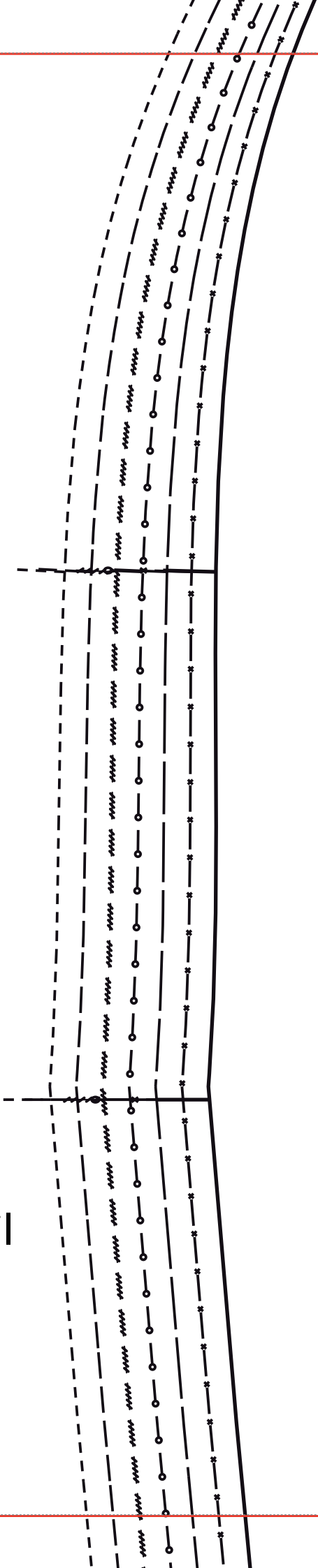


**BERNINA<sup>+</sup>**

Mittleres  
Rückenteil

Fadenlauf/ straight grain/ Droit fil

Rückwärtige Mitte / Centre back/ milieu envers



1

6

not on fold straight grain/ Droit fil milieu endroit pli

**BERNINA<sup>+</sup>**

Mittleres Vorderteil

7

4

8

9

10

11

12

5

13

14

6

15

16

17

7

18

19

8

20

9

25

10

11

30

12

13

35

Fadenlauf/ straight grain/ Droit fil

Fadenlauf/

Seitennaht / seam side/ Couture

lin/ Droit fil

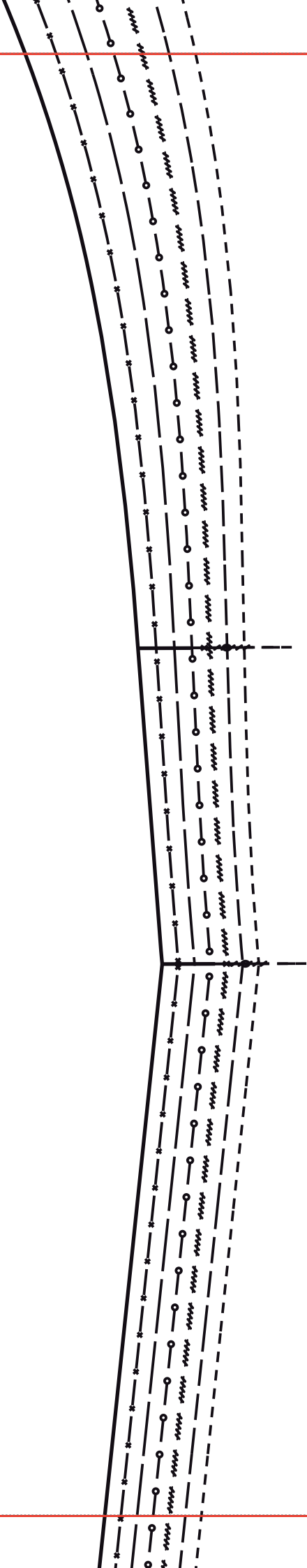
2

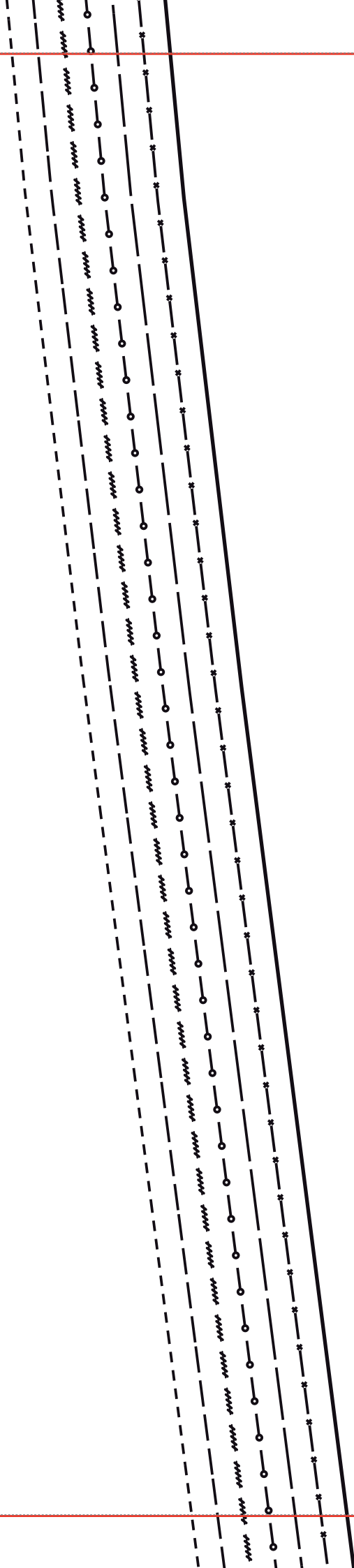
**BERNINA<sup>+</sup>**

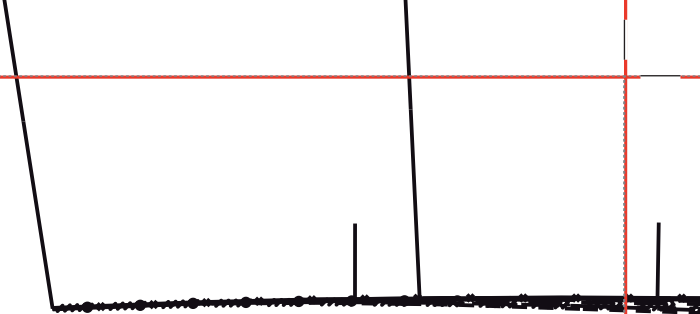
Seitliches oberes  
Vorderteil

Seitennaht

4



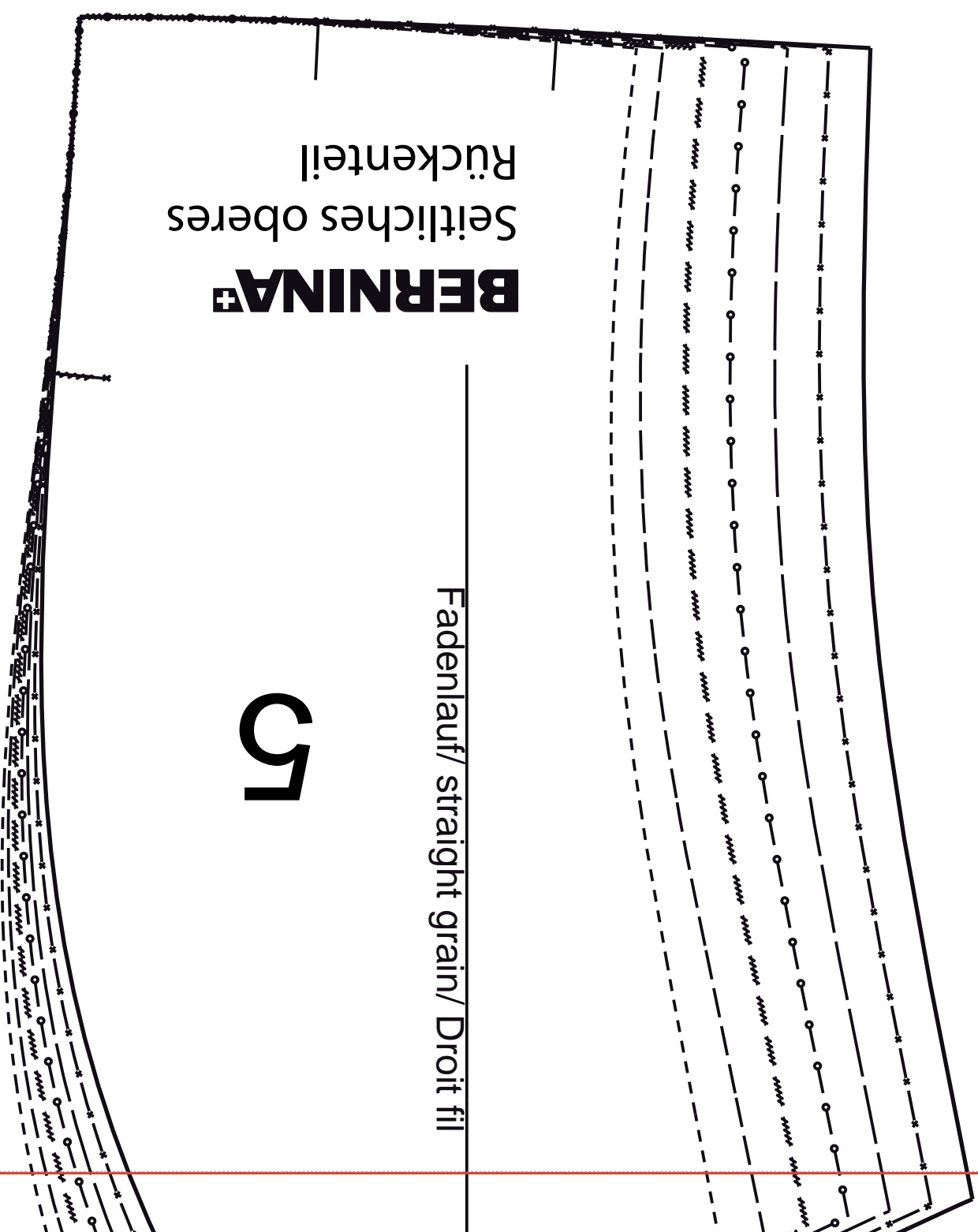




**BERNINA+**  
Seitliches oberes  
Rückenteil

Fadenlauf/ straight grain/ Droit fil

51

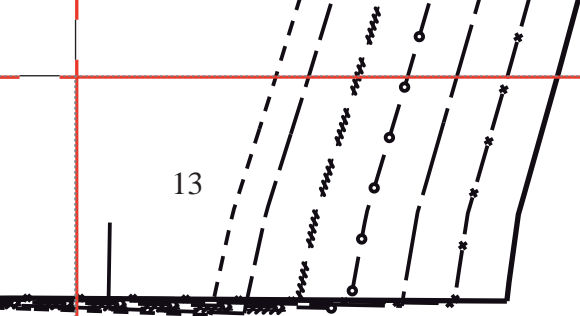


3

enlauf/ straight grain/ Droit fil



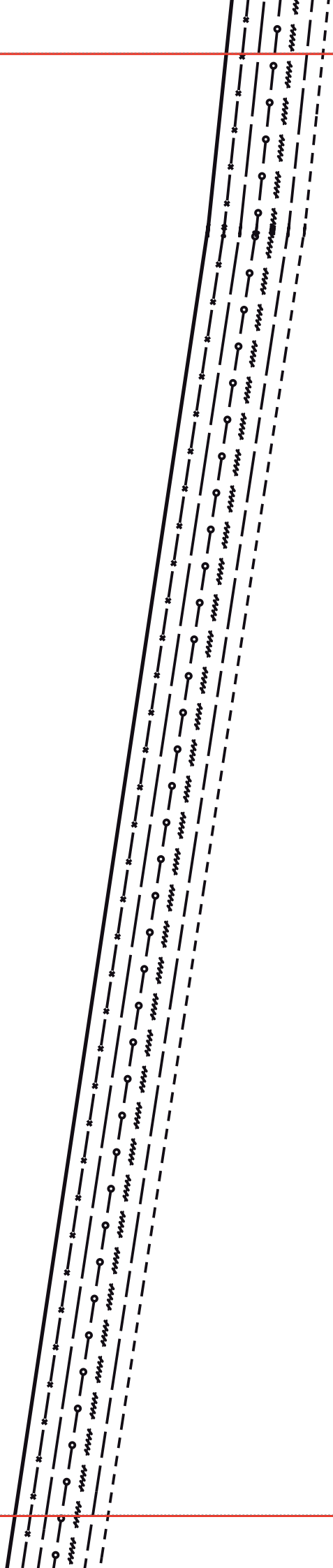
13

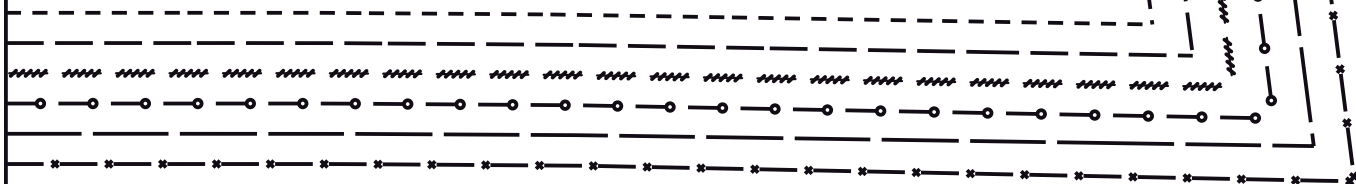
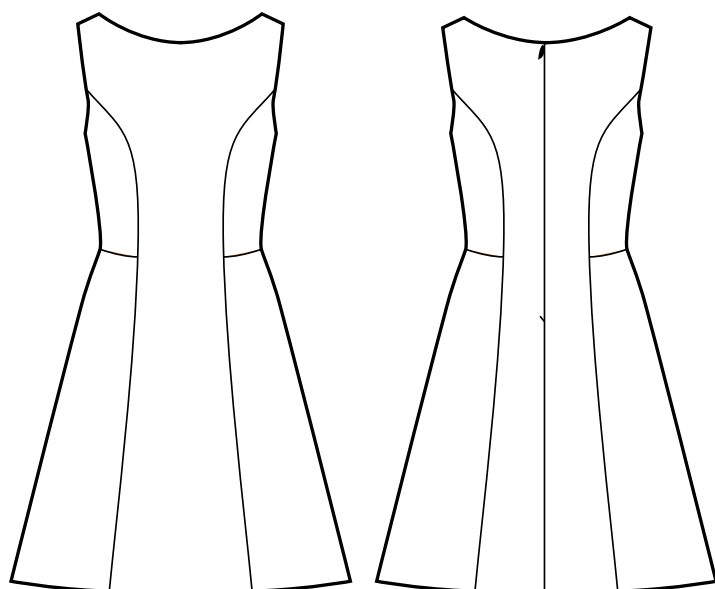


Reitenahnt / seam side / Couture

**BERNINA<sup>+</sup>**

Vorderes seitliches  
Rockteil





17

